

24<sup>th</sup> Annual



# The Herman Goldner Award for Regional Leadership



# Holly Greening

Executive Director

Tampa Bay Estuary Program



# The One Bay McIntosh Award



# Regional Collaboration Meets Tampa Bay Ecosystem Recovery Goals

## Tampa Bay Estuary Program



# Built Environment

## 1st Place



# Hillsborough County Historic Preservation Challenge Grant Program

## Hillsborough Co. Economic Development



# Built Environment

## 2<sup>nd</sup> Place





# Plant City Village Green

## City of Plant City



# Built Environment

## 2<sup>nd</sup> Place



# Legacy of Environmental Actions for Our Future (LEAF)

## Tampa International Airport



# Community Preparedness

## 1st Place



# Recommended Projection of Sea Level Rise in the Tampa Bay Region

## University of Florida, IFAS Extension



# Community Preparedness

2<sup>nd</sup> Place



# Public Outreach Effort for the 2015 July/August Flood Event

Pasco County Board of County Commissioners





# Community Preparedness

2<sup>nd</sup> Place





# Building Resiliency in Manatee County's Business Communities

Manatee Chamber of Commerce



*Manatee*  
CHAMBER of  
COMMERCE

*Strengthening Your Business and Our Community*

***National Chamber of the Year***

Four-Time Winner Florida Chamber of the Year

U.S. Chamber 5-Star Accredited



# Economy and Energy

## 1st Place



# Lockheed Martin Oldsmar 2MW Solar Carport

Lockheed Martin, Mission Systems and Training



# Economy and Energy

2<sup>nd</sup> Place





# Great Bay Solar

## Great Bay Distributors, Inc.



# Economy and Energy SMALL BUSINESS AWARD



# McGill Plumbing and Water Treatment, Inc.



# Natural Environment

## 1st Place





# Hillsborough River Interlocal Planning Board and Technical Advisory Council

## Hillsborough River Board



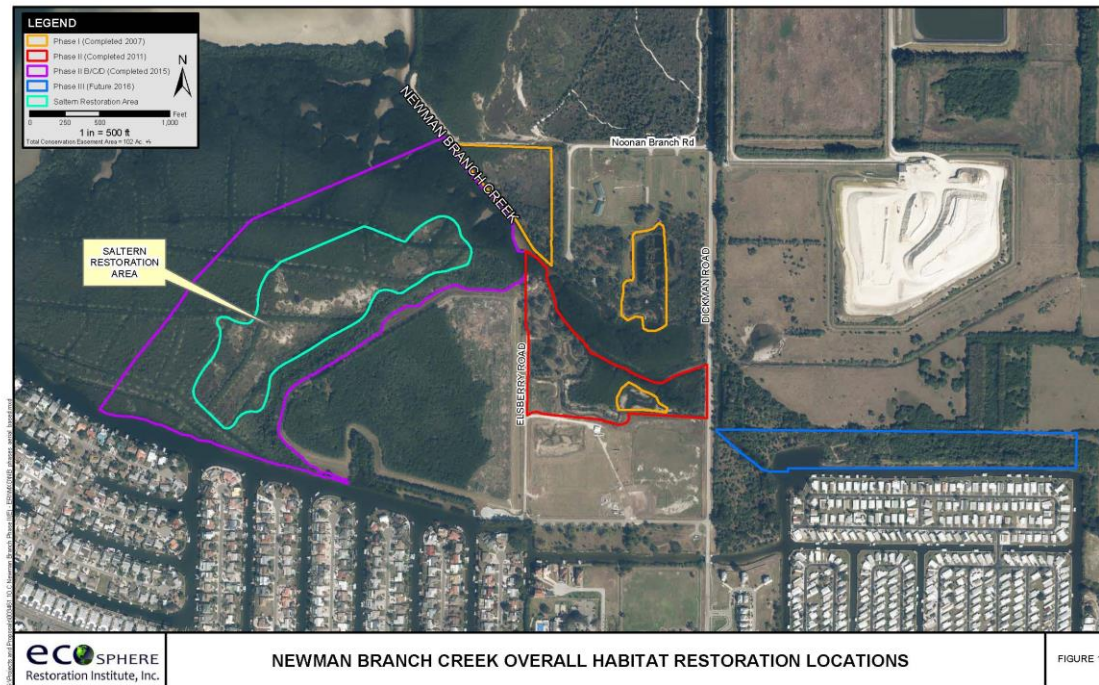
# Natural Environment

2<sup>nd</sup> Place



# Newman Branch Creek Ecosystem Restoration Project

## TECO Energy



# Transportation and Mobility

## 1st Place





# Tampa Bay Area Regional Transportation Authority 2015 Master Plan Update

TBARTA



# Transportation and Mobility

**2<sup>nd</sup> Place**



# Direct Connect Public-Private Transportation Partnership

## Pinellas Suncoast Transit Authority (PSTA)

