

21st Annual

Future of the
Region Awards

HOSTED BY THE
TAMPA BAY REGIONAL PLANNING COUNCIL

Monday, March 25, 2013
Hilton Carillon Park
St. Petersburg, Florida



HONORING NOTABLE ACHIEVEMENT IN
RESOURCE PLANNING AND MANAGEMENT
IN THE TAMPA BAY REGION





Mission Statement

To serve our citizens and member governments by providing a forum to foster communication, coordination and collaboration in identifying and addressing issues and needs regionally.

Executive Director

Manny L. Pumariega, AICP

Council Members

Chair, Mayor Bob Minning, City of Treasure Island

Vice Chair, Mr. Andy Núñez, Gubernatorial Appointee - Pinellas County

Secretary/Treasurer, Commissioner Victor Crist, Hillsborough County BoCC

Past Chair, Commissioner Larry Bustle, Manatee County

Mayor David Archie, City of Tarpon Springs

Commissioner Nina Bandoni, City of Safety Harbor

Vice Mayor Ron Barnette, City of Dunedin

Commissioner Scott Black, City of Dade City

Council Member Bob Boss, City of Temple Terrace

Councilman Gene Brown, City of Bradenton

Vice Mayor Woody Brown, City of Largo

Commissioner Jonathan Davis, City of Palmetto

Commissioner Bill Dodson, City of Plant City

Mr. Ming Gao, Florida Department of Transportation (Ex-Officio Member)

Mayor Samuel Henderson, City of Gulfport

Council Member Doreen Hock-DiPolito, City of Clearwater

Commissioner Lorraine Huhn, City of St. Pete Beach

Ms. Angeleah Kinsler, Hillsborough County - Gubernatorial Appointee

Council Member Bob Langford, City of New Port Richey

Commissioner Janet Long, Pinellas County BoCC

Commissioner Jack Mariano, Pasco County BoCC

Councilor Bob Matthews, City of Seminole

Council Member Janice Miller, City of Oldsmar

Ms. Michele Miller, Enterprise Florida (Ex-Officio Member)

Councilwoman Mary Mulhern, City of Tampa

Council Member Wengay Newton, City of St. Petersburg

Commissioner Gail Neidinger, City of South Pasadena

Mr. Todd Pressman, Southwest Florida Water Management District (Ex-Officio Member)

Mr. Tim Schock, Hillsborough County - Gubernatorial Appointee

Councilman Ed Taylor, City of Pinellas Park

Ms. Barbara Sheen Todd, Pinellas County - Gubernatorial Appointee

Ms. Kim Vance, Hillsborough County - Gubernatorial Appointee

Mr. Charles Waller, Pasco County - Gubernatorial Appointee

Councilwoman Jodi Wilkeson, City of Zephyrhills

Ms. Pamela Vazquez, Florida Department of Environmental Protection (Ex-Officio Member)

Tampa Bay Regional Planning Council

... convening the region

The Tampa Bay Regional Planning Council brings together local governments and gubernatorial appointees in the Tampa Bay Region to coordinate planning for the community's future while providing a venue for analyzing, resolving, and sharing solutions among the 43 jurisdictions in Pasco, Pinellas, Manatee and Hillsborough counties. The Regional Planning Councils are recognized as Florida's only multi-purpose regional entity in a position to plan and coordinate intergovernmental solutions to growth-related problems on greater-than-local issues, provide technical assistance to local governments, and meet other needs of the communities in the region. Participation in the Council is an investment in the Region's future.

Future of the Region Awards

The Tampa Bay Regional Planning Council exemplifies the significance of innovative planning by hosting an annual awards competition. The Future of the Region Awards Program provides honor and recognition for notable achievement in resource planning and management in the Tampa Bay area. The Council's mission in recognizing excellence is to encourage future vision and cooperation within the community.

This event, the 21st Annual Future of the Region Awards, is the culmination of months of planning and preparation by the Council and those who submitted applications. The Call for Entries was announced in October 2012 and entries were accepted through January 11, 2013. Over thirty applications were received covering the following categories:

- ◆ Community Service
- ◆ Cultural/Sports/Recreation
- ◆ Development/Infrastructure
- ◆ Natural Resources/Environment
- ◆ Going Green!
- ◆ Public Education



On February 15, 2013, the Independent Awards Jury, Charles D. Blume, Executive Director of the Apalachee Regional Planning Council; Ray Chiaramonte, Executive Director for the Hillsborough County Metropolitan Planning Organization; and Elisa N. Degregorio, Senior Vice President of Operations and Strategic Direction with the Tampa Bay Partnership, reviewed each entry on the following criteria:

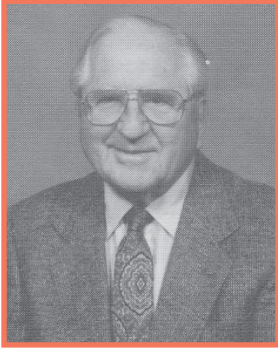
- ◆ Regional quality of life benefit
- ◆ Benefit to environment
- ◆ Innovation
- ◆ Cost effectiveness
- ◆ Capacity for continuing impact
- ◆ Regional benefit

After many hours of deliberation the judges acknowledged those projects representing notable achievement in resource planning and management in the Tampa Bay region. The Charles A. McIntosh, Jr. Award of Distinction was selected from the entire group of applications. The judges unanimously agreed that this project touched each of the categories, provided excellence in the region, and exhibited distinction in regional “visioning.”

Congratulations to all who entered!



Honoring 21 Years of Notable Achievement



THE CHARLES A. McINTOSH, JR. AWARD OF DISTINCTION, which recognizes outstanding achievement in the community, salutes a true statesman who dedicated a major portion of his life to improving the quality of life in the Tampa Bay region.

Charles A. McIntosh, Jr., joined the Council in 1985 at a time in life when many people retire to enjoy the easy life. For more than 15 years Mr. McIntosh served the citizens of Dade City, Florida, as Mayor and he still found time to serve as the Chairman of the Tampa Bay Regional Planning Council. He also served two terms as Chairman of the Tampa Bay Regional Planning Council Area Agency on Aging. The most prestigious award of the Annual Future of the Region Awards competition is named in his memory.

1992

Westchase: A Planned Residential Community
Newland Gulf Coast and Hillsborough County

1993

Osborne Woods: The Anchor Project for the East Tampa Initiative
City of Tampa

1994

St. Anthony's Boulevard Master Plan, Phase I
St. Anthony's Hospital and Harvard Jolly Clees
Toppe, Architects

1995

Florida International Museum and Treasures of the Czars
Harvard Jolly Clees Toppe, Architects

1996

Public Sector: Long Term Dredge Spoil Disposal Plan
Manatee County Port Authority

Private Sector: Clearwater Jazz Holiday Foundation
The Clearwater Jazz Holiday

1997

Public Sector: Penny For Pinellas Information Campaign
Pinellas County Board of County Commissioners

Private Sector: Morton Plant Mease Health Care
Community Health Initiative

1998

Inventing Tampa Bay Water: A Model of Regional Cooperation

1999

Hillsborough River Greenways Task Force

2000

Pinellas Star Center

2001

Finance Park: A Conservation Lifestyle Education Project
Pinellas County Utilities

2002

North Greenwood Transformation
City of Clearwater and Bank of America

2003

Rebuilding Community: Tampa Heights
The Planning Commission

2004

Dr. Pallavi Patel Performing Arts Conservatory at the Tampa Bay Performing Arts Center
Harvard Jolly

2005

Pinellas By Design
Pinellas County Government and Pinellas Planning Council

2006

Mayor's Mentors & More
City of St. Petersburg

2010

The Dali
The Beck Group

2007

**Strategic Regional Transit Needs
Assessment Video**

Florida Department of Transportation, Carter &
Burgess, Inc. and Tampa Digital Studios

2011

Clearwater Greenprint
City of Clearwater

2008

USF Research Park of Tampa Bay
USF CONNECT

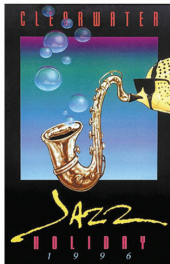
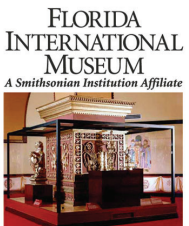
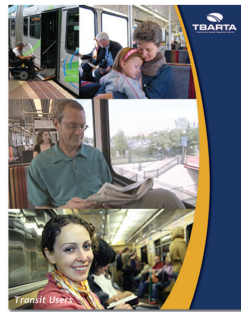
2012

Tampa Gateway Rail Terminal, Port of Tampa
Tampa Port Authority

2009

**New All Children's Hospital Campus -
St. Petersburg, FL**
All Children's Hospital

TBARTA Regional Transportation Master Plan
TBARTA



2012 Charles A. McIntosh, Jr.

Award of Distinction

SPONSORED BY OUR PARTNERS...BRIGHT HOUSE NETWORKS

Tampa Gateway Rail Terminal



The Gateway Rail Facility supports national and State of Florida renewable energy policies by promoting domestic ethanol production and reducing dependence on foreign energy sources. Once operational, the facility will handle over 300 million gallons of inbound ethanol each year. According to the U.S. Department of Energy, ethanol emits approximately 19 percent less carbon dioxide (CO₂) than gasoline. This facility will replace enough gasoline with ethanol to reduce CO₂ emissions by 1.1 billion pounds during its first year of operation. Over 10 years, as the growth of ethanol increases to 600 million inbound gallons per year, the project will replace enough gasoline to reduce CO₂ emissions by nearly 16 billion pounds.

Demand for ethanol will rise with long-term Florida population growth. Proposed Federal and state regulations are expected to raise the ethanol blend in gasoline from 10 to 15 percent also contributes to higher forecast demand. The new facility will accommodate rising demand by increasing ethanol handling capacity by fourfold at the Port of Tampa. The terminal will initially handle at least one unit train per week with capacity for up to six per week if ethanol demand continues to increase in future years. From the Gateway Rail Facility, the pipeline distribution system at the terminal connects directly to a major regional pipeline network, eliminating inbound ethanol trucks. The flexible terminal will also export ethanol to ships, should the market need arise. By increasing the efficiency and capacity of ethanol delivery to Florida, the Gateway Rail Facility promotes domestic ethanol competitiveness and will thereby help reduce dependence on foreign energy sources.

This project's innovation is inherent from conception through design and execution--featuring the *first* U.S. port facility for ethanol-unit-train-to-pipeline distribution, as well as the *first* on-dock unit train capability at a Florida container port. In addition to ethanol, the terminal will be multi-modal in nature, enjoying the transfer of multiple cargoes from ship to rail.



The track design allows for flexible expansion and accommodation of intermodal traffic from the adjacent marine terminal in the case that ethanol as a commodity does not grow at predicted levels. The flexible design features will ensure the viability of the facility and the port in the future by allowing the facility to adapt to surges in ethanol or intermodal demand. This design flexibility complements the Port of Tampa's mission to serve an increasingly diverse set of commodities to remain economically competitive.

The other way this project is innovative is the planned application of design-build and contract management features for the construction of the facility. These project development approaches ensured that the construction quickly stimulated the region's economy through rapid hiring of the workforce and purchase of materials.

This project exemplifies cross-disciplinary collaboration through the successful teaming of a major maritime port, a state department of transportation, and a private railroad. The partnership involves multiple modes – including pipeline – to enhance economic competitiveness of the region and of the national ethanol supply chain. Modal integration is critically important to the long-term success of this project, including its ability to reduce regional truck movements and provide the associated livability, environmental sustainability, and safety benefits.

This public-private partnership builds on previous collaborative groundwork by the port authority, Florida Department of Transportation, CSX and its subsidiary TRANSFLO and others during the two-year Master Plan development process.

US 19 Corridor Redevelopment Plan

The *US 19 Corridor Redevelopment Plan* is a guiding document that summarizes the current context of the corridor and sets forth an implementable vision to strengthen the identity, design, mobility, and competitiveness of the corridor in the region. The strategies identified in the Plan fall primarily under the purview of the City of Clearwater but also state the need for coordination with area businesses and various governmental entities. The project was funded through the Department of Energy's Energy Efficiency and Conservation Block Grant program, and builds upon goals and strategies contained in the award winning *Clearwater Greenprint (2011)*.

Over time US 19 has transitioned from a roadway providing land access to a limited-access highway. This change has affected which land uses are successful along the corridor. Recognizing the need to reposition the corridor in the City and the Region, the City of Clearwater has developed the Plan, which contains land use, economic, mobility and sustainability strategies that take into account the current and planned transportation improvements.

The Plan contains strategies that have implications for regional systems, such as transportation, water quality and air quality, as well as providing increased choice in housing and employment. Declining household size, increasing housing and energy costs, and a growing desire to trade commute time for family, service, work and recreation time are driving demand for walkable living. Residential

and employment centers near transit stops, coupled with walkable communities, can provide greater autonomy for children, seniors, low-income persons and others who may lack ready access to cars. Transit is a regional challenge, but is directly related to the other opportunities for which the City is planning. Strategies within the Plan address land use, urban form, and transportation changes needed to improve quality of life for those that live, work and play in the places along the corridor.

As the Plan was being developed, City staff involved the Pinellas Planning Council (PPC) staff in the discussion regarding desired increases in density and intensity. Simultaneously, PPC was developing new *Countywide Plan Rules* and updating the Countywide Future Land Use Map to make it more future oriented. This is in line with the One Bay effort which required a shift to long-term thinking. This principle is being embraced by the PPC in their efforts, as well as the City through this Plan that requires city leaders and residents to rethink the attitude of accepting our built environment as inevitable. Planning professionals assume that the built environment is not inevitable, but purposeful. The City of Clearwater views aging commercial corridors like US 19 as assets that deserve as much attention and resources as downtowns and historic neighborhoods. These corridors have tangible geographic advantages which can be fully leveraged to become an addition to, not a subtraction from, regional quality of life.

About One Bay...

The One Bay Regional Vision has drawn upon thousands of citizens to create a shared regional vision to plan where future population and employment growth should occur based upon responsible land use, mobility, economic and environmental sustainability. (Visit www.mylonebay.org for more details on the One Bay Regional Vision).

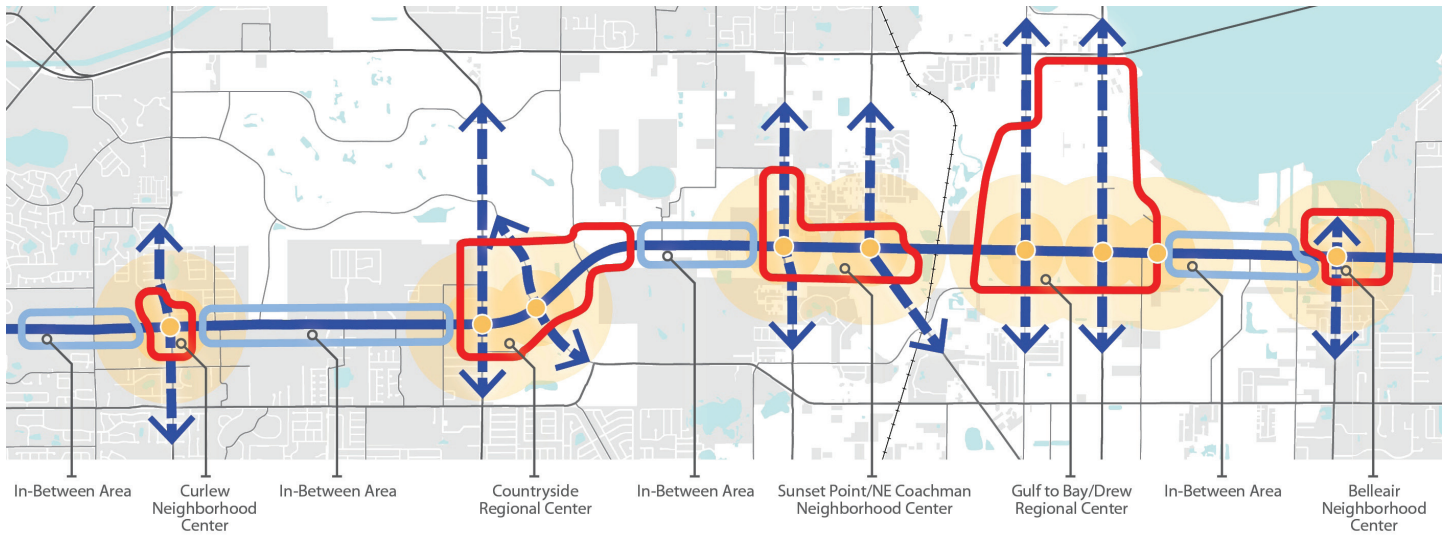
One Bay Regional Vision Recommendations:

- Support environmentally sustainable growth, protection of water resources, and energy conservation.
- Create jobs through sustainable economic development practices and fostering quality communities.

- Support increased diversity in housing options for families and individuals.
- Encourage compact and mixed-use development.
- Promote transit and transit-oriented development.
- Encourage preservation of open space and agricultural land.

One Bay Executive Committee

Southwest Florida Water Management District
Tampa Bay Estuary Program
Tampa Bay Partnership
Tampa Bay Area Regional Transportation Authority
Tampa Bay Regional Planning Council
The Urban Land Institute



Many of the strategies affect resources that do not stop at the city limits. To enhance transit service by providing Bus Rapid Transit and local circulators, the City will continue to advocate with PSTA. The recent Pinellas Alternatives Analysis shows a proposed light rail station just south of Clearwater, in Largo, near the intersection of US 19 and East Bay Drive. Continued advocacy for Bus Rapid Transit along US 19 is important in connecting northern Pinellas County to the planned light rail system to the south which will provide vastly improved regional transit connectivity. To enhance regional water quality the City will expand green street initiatives and the use of low impact development by coordinating with multiple governmental entities, including the Florida Department of Transportation, Pinellas County and the Southwest Florida Water Management District. Another strategy of the Plan, having interconnected street networks, allows trips to be dispersed from arterial roadways and decrease vehicle miles traveled. This provides benefits to neighboring communities, as well as reducing carbon emissions for the region. Enhanced pedestrian and cyclist facilities benefit all those that visit the corridor, even if just passing through, because they contribute to the overall connectivity for pedestrians and cyclists in the region.

When implemented, this Plan will not only reposition the US 19 corridor in the City, but will add to the number and diversity of quality places in the Region. This contributes to the overall perception of the Tampa Bay Region as an area prepared for the challenges and opportunities of the 21st Century.

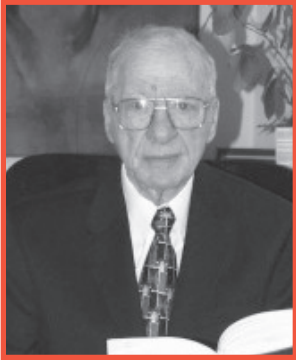


The Concept Study for the Belleair Road area was prepared to show how the shopping center site could become a new mixed-use destination. The sketch shows new retail and small office uses near the intersection of Belleair Road and US 19, larger-scale office buildings along the US 19 frontage, and multi-family residential to the east side of the site serving as a transition to existing residential uses. Redevelopment could start with residential, retail, and smaller office buildings, with the larger-scale, corporate office buildings coming on-line in future project phases.



2012 Herman W. Goldner

Award for Regional Leadership



“Gentlemen it is time to plan together,” St. Petersburg Mayor Herman W. Goldner told a group of Tampa officials on a hot September day in 1961. It was his pronouncement delivered at a meeting in St. Petersburg that led to the formation of the Tampa Bay Regional Planning Council.

The Herman W. Goldner Award for Regional Leadership is presented to an individual who exemplifies the spirit of regional cooperation, dedication to his/her community and notable achievement in encouraging future vision.

The award is named for the late Mr. Herman W. Goldner, former Mayor of St. Petersburg and founding father of the Tampa Bay Regional Planning Council. Mr. Goldner became mayor in 1961 with a landslide victory; he served an additional three terms as St. Petersburg’s leader.

Mr. Goldner graduated from Case Western Reserve University Law School, Harvard University Graduate School of Business and Miami University of Ohio. Mr. Goldner practiced law from 1945 until his retirement in 1991.

A TRIBUTE TO ROBERT A. “BOB” KERSTEEN

1937-2013



On January 5, 2013 the Tampa Bay Regional Planning Council (TBRPC) and the citizens of our region lost a life-long community leader. Robert A. “Bob” Kersteen was a member of the TBRPC for 17 years. He served the council in every capacity with a dedication

and determination to make things happen for the betterment of our region.

Bob was born in Kingston, Pennsylvania and obtained degrees in business and law from LaSalle University. In 1962, the same year that Herman W. Goldner founded the Tampa Bay Regional Planning Council, Bob moved to St Petersburg beginning his 32 year career with GTE. As would be fitting of Bob’s commitment, this past year he served on the Council’s 50th Anniversary Celebration Committee.

He was dedicated to his community, serving as:

City Councilman, City of St. Petersburg; Chair of the Tampa Bay Regional Planning Council; Chair of the TBRPC Agency on Bay Management; Representative on the Metropolitan Planning Organizations Chairman’s Coordinating Committee; Chair of the National League of Cities; Chair of the Pinellas Planning Council; Chair of Friends of Weedon Island; and Chair of Albert Witted Airport Preservation Society.

Bob was also a proud Head Coach and Chair of the Azalea Soccer League and served as President of numerous PTAs. He was devoted to his church of over 30 years, Our Savior Lutheran and served as their congregational President.

He is survived by his wife of 48 years, Judith; his son Craig and daughter Marla; and grandchildren Andre, Kailyn and Braden. Today we honor Bob’s memory and community service with an honorary Herman W. Goldner Award for Regional Leadership.

“The Tampa Bay Regional Planning Council is going to miss Bob and his many contributions. More than that, the region is going to miss his life-long efforts to preserve our overall quality of life. His lasting legacy will be the effort we all continue to make toward keeping our communities the best places to live, work and play.” - Manny L. Pumariega, TBRPC Executive Director

*Congratulations to the past recipients of
The Herman W. Goldner Award for Regional Leadership*



2011
Lee Arnold, Jr.



2010
Commissioner Karen Seels
Pinellas County, Florida



2009
Jan Kaminis Platt



2008
Dr. Judy Genshaft
President
University of South Florida



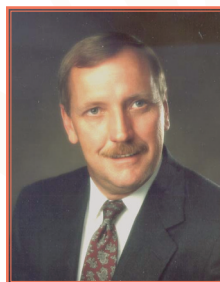
2007
Joe Smith
Chair
Tampa Bay Partnership's
Transportation Initiative



2006
W. Don Whyte
President
Newland Communities Southeast



2005
David J. Fischer
President/CEO
Community Foundation
of Tampa Bay



2004
Louis Miller
Executive Director
Hillsborough County
Aviation Authority



2003
Commissioner
Ronnie Duncan



2002
Commissioner
Robert "Bob" Stewart

2012 Herman W. Goldner

Award for Regional Leadership

SPONSORED BY OUR PARTNERS...THE MOSAIC COMPANY



Rhea Law

The Herman Goldner Award for Regional Leadership is presented to an individual who exemplifies the spirit of regional cooperation, dedication to his/her community and notable achievement in encouraging future vision. The award is named for former St. Petersburg Mayor and founder of the Tampa Bay Regional Planning Council, Herman W. Goldner.

The Tampa Bay Regional Planning Council is honored to announce the 2012 Herman Goldner Award for Regional Leadership; Rhea F. Law...

Rhea F. Law is Chair and CEO of Fowler White Boggs P.A. In 2002, Rhea became the only woman to head a major law firm in Florida, representing one of only 6% of women nationally to head a large law firm. In addition to her leadership activities at Fowler White, she has been tapped for many state and national positions such as gubernatorial appointments to lead the University of South Florida (USF) Board of Trustees, and serving as Vice Chair of the Florida Council of 100, an advisory counsel to the Governor of the State of Florida. Most recently, she served as Chair of the Growth Management and Economic Development Task Forces for the Florida Council of 100 acting as the Governor's liaison for economic development. She also chairs the Command Advisory Council for MacDill AFB and is immediate past chair of the Tampa Hillsborough Economic Development Corporation. In February 2012, she became President of the United States Law Firm Group.

Ms. Law is a member of the American Bar Association and the Florida Bar, and practices in the areas of Land Use, Governmental and Environmental Law. She has successfully represented many developments of regional impact and other large commercial and/or residential developments throughout the State of Florida. Rhea has chaired the Florida Bar Grievance Committee, the Environmental and Land

Use Section for the Hillsborough County Bar Association and various advisory boards for local governments.

Rhea Law has received numerous recognitions including: Recipient of the 2010 University of Florida President's Fellow Medallion; Tampa Bay's 100 Most Influential Business Leaders; Tampa Bay CEO of the Year; Business Woman of the Year and inducted into the Business Hall of Fame for Tampa Bay and St. Petersburg; Chair's Cup for Excellence in Regionalism by the Tampa Bay Partnership; Florida Legal elite Hall of Fame; and Stetson University College of Law Hall of Fame.

Rhea inspires others through her exceptional leadership skills. She exemplifies committed leadership not only with Fowler White Boggs, but throughout the Tampa Bay Community. Her commitment to both service and excellence is evident in the many leadership positions she holds and the accolades she has received. Whether she is leading the law firm of Fowler White Boggs, or one of the many community organizations in which she is involved, she leads by example and she never asks others to do what she is not willing to do herself. No challenge is too large for her to tackle and no detail is too small to attract her attention. Rhea is called upon to lead in adverse situations because she accepts the responsibility for making the "tough calls" and coalescing divided views into positive actions.

Ms. Law was born and raised in Florida and received her B.A. With Honors, from the University of South Florida and her J.D. With Honors, from Stetson University College of Law, where she served as Executive Editor and wrote extensively for the Stetson Law Review.

"Rhea Law has been an impactful member of our community and has been a catalyst for a great number of positive changes in our region. She is, without a doubt, an outstanding business and community leader and a woman of impeccable integrity." - Dr. Judy Genshaft, President of the University of South Florida and 2008 Herman W. Goldner Award Winner

22nd Annual
Future of the
Region Awards



*We cordially invite you to participate in next year's...
22nd Annual Future of the Region Awards*

Call for Entries - October 2013
Deadline for Entries - Early January 2014

22nd Annual Future of the Region Awards Luncheon - March 2014
Venue to be announced

For more information or to be placed on the mailing list, please contact Wren Krahl, Director of Administration/Public Information, wren@tbrpc.org, 727-570-5151 ext. 22.

Visit the website to view the Annual Future of the Region Commemorative Programs, www.tbrpc.org.

The Awards Program

Co-Sponsored by our partners...TD Bank The Mosaic Company

The significance of innovative planning has never been more important than it is today. The Future of the Region Awards Program provides honor and recognition for notable achievement in the public and private sector for resource planning and management in the Tampa Bay region. The Tampa Bay Regional Planning Council's mission in recognizing excellence is to encourage future vision and cooperation within the regional community.

21st Annual Future of the Region

**Dedicated to the Memory of Robert A. "Bob" Kersteen
1937-2013**

Monday, March 25, 2013
11:45 a.m. - 1:30 p.m.

Hilton Carillon Park
St. Petersburg, Florida

Our Judges

Charles D. Blume, Executive Director
Apalachee Regional Planning Council

Ramond A. Chiaramonte, Executive Director
Hillsborough County Metropolitan Planning Organization

Elisa N. DeGregorio, Senior Vice President, Operations & Strategic Direction
Tampa Bay Partnership

Menu

Smoked Beef Brisket with Sundried Tomato Cherry Jus and
Roasted Fingerling Potatoes

Blue Cheese Lettuce Wedge with Avocado, Bacon and Creamy Herb Dressing

Key Lime Cheese Cake

Rolls and Butter

Water and Ice Tea



The Program

Welcome & Introductions

Mayor Bob Minning
Chair
TBRPC

Mistress of Ceremonies

Ms. Barbara Sheen Todd
Past Chair and Gubernatorial Appointee

A Tribute to Robert A. "Bob" Kersteen 1937-2013

Invocation

Mr. Andy Núñez
Vice Chair
Tampa Bay Regional Planning Council

Luncheon

Presentation

21st Annual Future of the Region Awards
Mistress of Ceremonies, Ms. Barbara Sheen Todd
Past Chair and Gubernatorial Appointee

Presentation

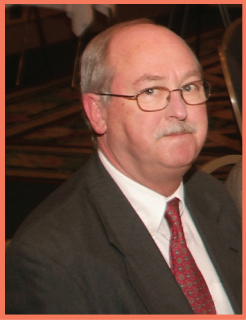
The Charles A. McIntosh, Jr. Award of Distinction
The Herman W. Goldner Award for Regional Leadership
One Bay Award

Closing Remarks

Commissioner Victor Crist
Secretary/Treasurer
Tampa Bay Regional Planning Council

Adjourn

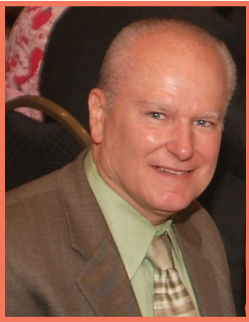
The Independent Awards Jury



Charles D. Blume

Mr. Blume currently serves as Executive Director of the Apalachee Regional Planning Council. He has held this position for twenty-six years. Prior to his service at the regional planning council, he was the Gadsden County planning and zoning director for seven years.

Mr. Blume holds a Master of Science in Public Administration from Florida State University.



Ramond A. Chiaramonte

Mr. Chiaramonte brings many years of public and private planning experience to his former role as Assistant Executive Director of the Hillsborough County City-County Planning Commission. In April of 2008, he was named Interim Executive Director of the Hillsborough County Metropolitan Planning Organization (MPO), the long range transportation planning agency for Hillsborough County and the jurisdictions of Tampa, Plant City and Temple Terrace. The Planning Commission/MPO is Florida's only state mandated long range planning agency serving the four local governments in Hillsborough County, Florida. His professional experience in planning spans three comprehensive plans and many updates, and includes public and private sector work.



Elisa N. DeGregorio

Elisa N. DeGregorio is Senior Vice President of Operations & Strategic Direction with the Tampa Bay Partnership. She is responsible for working with community leaders and investors towards the development of the next three year strategic plan. She will be working to ensure cohesion and collaboration across the programs to fulfill the goals of the new plan.. She is responsible for communicating the organization's initiatives and elevating the Partnership's leadership position in the region and nationally.

Ms. DeGregorio joined the Tampa Bay Partnership in March 2000 and during her tenure she has been responsible for expanding civic leadership activities to increase and improve community engagement and coordinate public-private partnerships and coalitions. In 2006 she began and continues to manage the regional visioning efforts of the Tampa Bay Partnership Regional Research & Education Foundation that includes the ONE BAY initiatives of Livable Communities, Healthy Communities and Lifelong Learning.



Community Service

First Place

Plant City Family Care Redevelopment Project City of Plant City and Suncoast Community Health Centers Inc.

The Plant City Family Care Redevelopment Project is a public/private partnership which transformed a blighted, environmentally contaminated gas station and convenience store into the newly expanded Suncoast Community Healthcare Centers, Plant City Family Care Center.



Second Place

Innovation for a No Kill Nation: Anything's PAWsible! Manatee County Animal Services

Manatee County Animal Services is working to change the image of Animal Services from a place where animals die to a place where animals find homes. They are working toward creating a total community, all dedicated to saving the lives of animals. In the end, their goal is to see a No Kill Nation.



Honorable Mention

Public Works Municipal Vehicle & Equipment City of Dunedin, Florida

The City of Dunedin created an initiative to foster relationships between Public Works & Utilities Directors of North Pinellas County municipalities to consider an expanded exchange of information regarding the potential sharing of each of the five cities' vehicles, large and small equipment, and certain other specialty equipment resources. The program makes certain higher cost, or special purpose equipment typically only attainable by larger municipalities available to smaller cities with more limited budgets.



First Place

**Bradenton Riverwalk Park
Bradenton Downtown Development Authority**

Bradenton Riverwalk is a 1.5 mile renovation project planned and managed by the Bradenton Downtown Development Authority that features sustainable design, diverse amenities to encourage wellness, recreation, entertainment, and enjoyment of the river by the entire community. The project is a public-private partnership with Realize Bradenton for programming and management.



Second Place

**Prodigy, Tampa
University Area Community Development Corporation, Inc.**

Prodigy is a prevention, intervention and diversion program for at-risk youth ages 7-17. Prodigy improves the community and transforms young lives by using visual and performing arts as a way to reach at-risk youth from the community.



Honorable Mention

**Largo Community Center-A Senior Center & So Much More
City of Largo, Florida**

This platinum LEED certified community center developed from a land gift from a local senior living company has become a center for active senior and performing arts programs. The center features a park setting with community gardens, a ballroom, a commercial kitchen, dance studios, rooms for socializing, an art studio and meeting rooms. Designed for efficiency in both energy as well as personnel and operating costs, the center is double the size of the previous center, has no additional staff but has dramatically increased its revenue generation and membership.



The following entries received a Certificate of Nomination

- ◆ **Bradenton Area Convention Center-Manatee County**
- ◆ **Parrish Community Center- Manatee County**
- ◆ **Crosley Carriage House- Manatee County**



Development / Infrastructure

First Place

US 19 Corridor Redevelopment Plan City of Clearwater, Florida

The US 19 Corridor Redevelopment Plan is a guiding document that summarizes the current context of the corridor and sets forth an implementable vision to strengthen the identity, design, mobility, and competitiveness of the corridor in the region.

Second Place

Waterset Community & Waterset Amenity Center Newland Communities

The 2,352 acre Waterset community is located south of Tampa in Apollo Beach, FL, and is currently approved to have approximately 6,400 homes when complete. Plans for the community include miles of trails, a County Sports Complex, on-site schools, clubhouses with pools & fitness, and parks & ponds. Homes include a variety of price ranges and architectural styles.

Honorable Mention

Economic Potential Evaluation of the Future of Hillsborough County Comprehensive Plan Wade Trim, Strategic Planning Group, Inc., Hillsborough County City-County Planning Commission

The Economic Potential Evaluation of the Future of Hillsborough County Comprehensive Plan project identifies opportunities to advance economic development within Hillsborough County and the cities of Tampa, Temple Terrace and Plant City through strategic amendments which send a clear message that the Tampa Bay region is “open for business”.



The following entries received a Certificate of Nomination

- ◆ Downtown Bradenton Transit Station- Manatee County
- ◆ 2012 Community Redevelopment Agency Redevelopment Plan-City of New Port Richey, Florida
- ◆ Central Avenue Revitalization Plan- City of St. Petersburg, Florida
- ◆ Manatee Advanced Traffic Management System- Manatee County
- ◆ City of Tampa Walk-Bike Plan Phase 1 & 2- Tindale-Oliver & Associates
- ◆ SMART Connect in Sarasota & Manatee Counties- Tindale-Oliver & Associates
- ◆ Pinellas County Alternatives Analysis- PSTA
- ◆ PSTA's North County Connector Routes- PSTA
- ◆ PSTA's Real Time Bus Information- PSTA
- ◆ Bayside Court Apartments-City of Largo, Florida
- ◆ Timing & Phasing System Pasco County Transportation- Pasco County



Natural Resource / The Environment

First Place

Clam Bayou Ecosystem Restoration & Stormwater Treatment Project Southwest Florida Water Management District, City of St. Petersburg, City of Gulfport

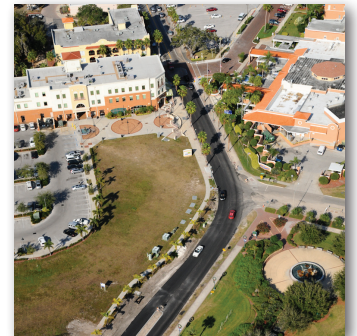
The Clam Bayou Phase 3 Ecosystem Restoration and Stormwater Treatment Project is a collaborative effort between the SWIM Program of the Southwest Florida Water Management District and the Cities of St. Petersburg and Gulfport. This third and final project for the bayou is distributed among seven sites (44.14 acres), restoring 24.14 acres of estuarine, freshwater, and upland habitats and providing 20 acres of stormwater treatment ponds that treat runoff from a 2,558 acre urbanized watershed. Establishment of the Clam Bayou Nature Park is complemented by the City of St. Petersburg constructed multi-use trail that meanders throughout the project footprint, ultimately merging with the Pinellas Trail.



Second Place

South Bayshore Water Quality Improvements City of Safety Harbor, Florida

The South Bayshore Water Quality and Drainage Improvements project is an effort to reduce the detrimental effects of stormwater-borne pollution, both suspended and dissolved, on the health of the waters of Old Tampa Bay. The project also includes the alleviation of severe drainage problems by the inclusion of modern-day stormwater management practices.



Honorable Mention

Bayhead Stormwater Harvesting Park City of Largo, Florida

This project turned a downtown drainage project into an urban park using a first of its kind treatment system approved by the water management district. The irrigation system is designed to utilize pond water to irrigate the park's native plantings and provide significant stormwater treatment for water flowing into Boca Ciega Bay. This partnership project provides trails, park amenities and environmental education to patrons.



The following entries received a Certificate of Nomination

- ◆ Oak Tree Plaza Downtown "Pocket-Park" Initiative



Going Green!

First Place

Tampa Gateway Rail Terminal, Port of Tampa Tampa Port Authority

This project is a new, rail-centric facility providing capacity for 96-car unit trains of ethanol arriving from the U.S. Midwest and establishing multi-cargo rail service to the Port's container terminal. Pipelines will transfer ethanol directly from rail cars to adjacent ethanol blending facilities before regional distribution. Project also provides on-dock capacity to the Port's intermodal container terminal to the national rail network.



Second Place

Plant City Family Care Redevelopment Project City of Plant City and Suncoast Community Health Centers Inc.

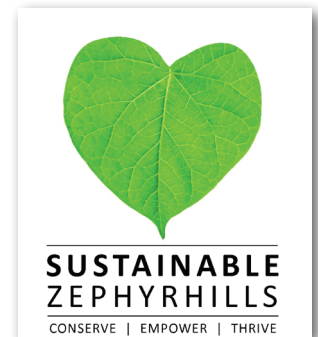
The Plant City Family Care Redevelopment Project is a public/private partnership which transformed a blighted, environmentally contaminated gas station and convenience store into the newly expanded Suncoast Community Healthcare Centers, Plant City Family Care Center.



Honorable Mention

Sustainable Zephyrhills, A Community Action Plan City of Zephyrhills, Florida

The City of Zephyrhills and community stakeholders created a plan to guide community involvement toward a greener, more sustainable future. Sustainable Zephyrhills, A Community Action Plan charts a course of action for protecting natural resources that sustain us, growing a resilient local economy and enhancing quality of life for all.



The following entries received a Certificate of Nomination

- ◆ Streamlining Single Stream Recycling- City of Oldsmar, Florida
- ◆ Bayhead Stormwater Harvesting Park- City of Largo, Florida
- ◆ Prodigy Tampa, University Area Community Development Corporation, Inc.
- ◆ City of Dunedin Community Garden- City of Dunedin, Florida

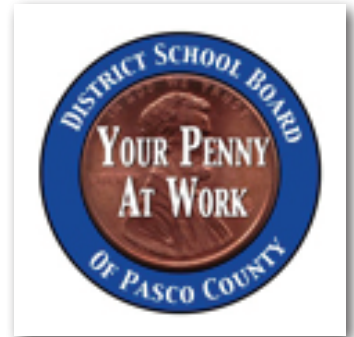


Public Education

First Place

Public Outreach for 2015 Penny for Pasco Renewal Pasco County Board of County Commissioners, District School Board of Pasco

The Penny for Pasco has funded critical infrastructure, new school construction and renovations, capital purchases and environmental lands acquisition, since it was approved by Pasco County voters on March 9, 2004. With the Penny for Pasco expiring on December 31, 2014, Pasco County, the District School Board and the municipalities agreed that it was critical to initiate the renewal efforts in 2012. A collaborative public outreach strategy was undertaken to educate our citizens and pro-actively engage our voters. On November 6, 2012, over 70% of Pasco County voters supported the renewal of the 2015 Penny for Pasco. The renewal of the penny will result in the County’s continuing investment in our future and enhance the quality of life for all our citizens.



Second Place

Play Unplugged: Just What the Doctor Ordered at Largo City of Largo, Florida

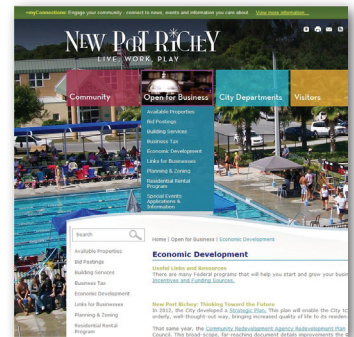
This public education event promoted the benefits of active, outdoor, creative, child directed play as an antidote to the child obesity epidemic and brought over 15,000 participants to Largo Central Park. It was a cooperative venture between the city, the county health department, and numerous health care and corporate partners. The event provided not only fun and engaging activities, but training for child care workers and parents to further extend, apply and principles of play and healthy child development.



Honorable Mention

2012 Website Makeover City of New Port Richey

The new website utilizes the latest innovative technology providing better online communications for the citizens. The City’s Live/Work/Play logo is prominently featured in the distinctive design with customized features. It fulfilled the City’s desire to promote open and transparent access to municipal offices in an efficient manner



The following entries received a Certificate of Nomination

- ◆ PSTA’s Bus Buzz



Mosaic proudly invests in programs that help our hometowns thrive.

By providing essential crop nutrients to farmers, The Mosaic Company helps the world grow the food it needs. Across Florida, we focus on feeding communities, safeguarding wildlife, protecting critical water sources and supporting education. We understand that the strength and vibrancy of our local communities are the seeds of our success.

Mosaic believes in partnering with nonprofits in innovative ways that address their specific needs and closely align with our mission. This includes monetary donations and partnerships, as well as the engagement of Mosaic employees volunteering their time and energy.

Visit www.mosaicco.com/florida to learn more about Mosaic's efforts in your area.

Let's keep our communities growing, together.



You work
hard.

It's about time
somebody noticed.



Congratulations from your
friends at TD Bank.



America's Most Convenient Bank®

1-888-751-9000 | www.tdbank.com

Is the **cost of commuting** starting to get you down?

Is it starting to negatively impact your employees? **What can you do to help?**



Think Telework!

Allowing your employees to work one or more days per week from home can significantly reduce the cost of commuting for the employee, and at the same time increase productivity, improve employee retention and recruitment, improve morale, and help your company do its part in reducing fuel consumption, congestion and pollution.

To learn more about telework and how it can work for you; visit www.teleworktampabay.org or contact Jessica Lunsford at 727/570-5151 ext. 38 for a **free** copy of the *Telework Tampa Bay Implementation Guide*.

www.teleworktampabay.org



Telework Tampa Bay is a program of the Tampa Bay Regional Planning Council, Bay Area Commuter Services and the Florida Department of Transportation.

AUDIENCE RESPONSE SYSTEM



LET THE TAMPA BAY REGIONAL PLANNING COUNCIL MOVE YOUR NEXT MEETING INTO THE 21ST CENTURY!

Tampa Bay Regional Planning Council has acquired an Interactive Audience Response system. The system consists of credit card sized keypads, receivers, and software. Participants answer questions displayed on a screen and receive answer confirmation on their ResponseCard through two-way communication. Successful transmissions are acknowledged on the participant's keypad via a three second long visual green light signal. In addition to displaying the audience response instantly on-screen, the TurningPoint software can perform demographic slicing of all responses in countless ways.

Currently the Council owns 350 keypads but can add additional keypads for larger events.

To find out how the system can energize your meetings contact, Brady Smith, brady@tbrpc.org, or Avera Wynne, avera@tbrpc.org.

Bay Soundings

BAYSOUNDINGS.COM
COVERING THE TAMPA BAY WATERSHED

Explore the waterfront, the watershed and issues of Tampa Bay with
Bay Soundings!

Bay Soundings chronicles the news and issues affecting the bay, while profiling the people, places and creatures that make it so compelling. Thanks to generous community support, Bay Soundings is distributed free of charge due to the following prime sponsors: Tampa Bay Regional Planning Council, Tampa Bay Estuary Program, and the Florida Department of Transportation - District Seven.

Interested readers may subscribe online at www.baysoundings.com or send an email to circulation@baysoundings.com. Copies are also available at area attractions, and a wide variety of businesses and civic organizations throughout the region.

If you or your company would like to become a sponsor of Bay Soundings, please contact Suzanne Cooper at the Tampa Bay Regional Planning Council, (727) 570-5151 ext. 32 or email suzanne@tbrpc.org.

www.baysoundings.com

Tampa Bay is getting better...

YOU CAN HELP!



Reel in your tarpon tag today and help keep Tampa Bay on the road to recovery. Please request a Tampa Bay Estuary license tag the next time you renew your auto registration. Be a part of an environment success story - the restoration of Florida's largest open-water estuary. When it comes time to renew your car, motor home or boat trailer license plate, or even before, choose the Tampa Bay Estuary specialty plate. You will be contributing directly to projects that restore Tampa Bay's natural habitats and improve water quality - ensuring the survival of inhabitants like the spectacular Silver King Tarpon that's pictured on the plate.

Tarpon illustration by Russ Simons

Acknowledgments

The Tampa Bay Regional Planning Council wishes to extend its sincere appreciation to the organizations that generously sponsored the 21st Annual Future of the Region Awards Luncheon.

Platinum Sponsors



America's Most Convenient Bank®

Tampa Bay Regional Planning Council

4000 Gateway Centre Blvd., Suite 100, Pinellas Park, FL 33782

Phone: (727) 570-5151

FAX: (727) 570-5118 Suncom: 513-5066 Suncom FAX: 513-5118

www.tbrpc.org