

17th Annual
Future of the
Region Awards

HOSTED BY THE
TAMPA BAY REGIONAL PLANNING COUNCIL

Friday, March 20, 2009
Quorum Hotel
Tampa, Florida



HONORING NOTABLE ACHIEVEMENT IN
RESOURCE PLANNING AND MANAGEMENT
IN THE TAMPA BAY REGION





Mission Statement

To serve our citizens and member governments by providing a forum to foster communication, coordination and collaboration in identifying and addressing issues and needs regionally.

Executive Director

Manny L. Pumariega, AICP

Council Members

Chair, Commissioner Bill Dodson, City of Plant City

Vice Chair, Commissioner Jack Mariano, Pasco County

Secretary/Treasurer, Ms. Jill Collins, Gubernatorial Appointee - Hillsborough County

Past Chair, Vice Mayor Deborah Kynes, City of Dunedin

Commissioner Nina Bandoni, City of Safety Harbor

Commissioner Kevin Beckner, Hillsborough County

Ms. Jane Bittner, Gubernatorial Appointee - Pinellas County

Mayor Scott Black, City of Dade City

Commissioner Neil Brickfield, Pinellas County

Commissioner Woody Brown, City of Largo

Mayor Shirley Bryant, City of Palmetto

Commissioner Larry Bustle, Manatee County

Deputy Mayor Bob Consalvo, City of New Port Richey

Commissioner Kathleen Peters, City of South Pasadena

Council Member Alison Fernandez, City of Temple Terrace

Mr. Julian Garcia Jr., Gubernatorial Appointee - Hillsborough County

Ms. Deborah Getzoff, Ex-Officio - F.D.E.P.

Mr. Robert Kersteen, Gubernatorial Appointee - Pinellas County

Mr. Harry Kinnan, Gubernatorial Appointee - Manatee County

Ms. Angeleah Kinsler, Gubernatorial Appointee - Hillsborough County

Councilor Bob Matthews, City of Seminole

Vice Mayor Harry Metz, City of St. Pete Beach

Council Member Janice Miller, City of Oldsmar

Ms. Michelle R. Miller, Ex-officio - Enterprise Florida

Mayor Bob Minning, City of Treasure Island

Councilwoman Mary Mulhern, City of Tampa

Mr. Andy Núñez, Gubernatorial Appointee - Pinellas County

Councilman Karl Nurse, City of St. Petersburg

Council Member Carlen Peterson, City of Clearwater

Mr. Todd Pressman, Ex-Officio - SWFWMD

Councilman Patrick Roff, City of Bradenton

Vice Mayor Robin Saenger, City of Tarpon Springs

Councilman Ed Taylor, City of Pinellas Park

Ms. Barbara Sheen Todd, Gubernatorial Appointee - Pinellas County

Ms. Kim Vance, Gubernatorial Appointee - Hillsborough County

Mr. Charles Waller, Gubernatorial Appointee - Pasco County

Ms. Laura Woodard, Gubernatorial Appointee - Hillsborough County

Commissioner Robert Worthington, City of Gulfport

Mr. Earl Young, Gubernatorial Appointee - Pasco County

Tampa Bay Regional Planning Council

... convening the region

The Tampa Bay Regional Planning Council brings together local governments and gubernatorial appointees in the Tampa Bay Region to coordinate planning for the community's future while providing a venue for analyzing, resolving, and sharing solutions among the 43 jurisdictions in Pasco, Pinellas, Manatee and Hillsborough counties. The Regional Planning Councils are recognized as Florida's only multi-purpose regional entity in a position to plan and coordinate intergovernmental solutions to growth-related problems on greater-than-local issues, provide technical assistance to local governments, and meet other needs of the communities in the region. Participation in the Council is an investment in the Region's future.

Future of the Region Awards

The Tampa Bay Regional Planning Council exemplifies the significance of innovative planning by hosting an annual awards competition. The Future of the Region Awards Program provides honor and recognition for notable achievement in resource planning and management in the Tampa Bay area. The Council's mission in recognizing excellence is to encourage future vision and cooperation within the community.

This event, the Seventeenth Annual Future of the Region Awards, is the culmination of months of planning and preparation by the Council and those who submitted applications. The Call for Entries was announced in October 2008 and entries were accepted through January 9, 2009. Forty-four applications were received covering the following categories:

- Community Service
- Cultural/Sports/Recreation
- Development
- Environmental
- Infrastructure
- Public Education



On February 5, 2009, the Independent Awards Jury, Charles D. Blume, Executive Director of the Apalachee Regional Planning Council; Christopher Steinocher, Marketing Director of the Tampa Bay Partnership; and Ray Chiamonte, Executive Director for the Hillsborough County Metropolitan Planning Organization, reviewed each entry on the following criteria:

Regional quality of life benefit

Benefit to environment

Innovation

Cost effectiveness

Capacity for continuing impact

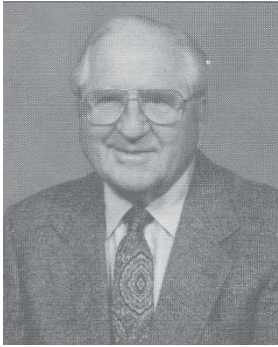
Regional benefit

After many hours of deliberation the judges acknowledged those projects representing notable achievement in resource planning and management in the Tampa Bay region. The Charles A. McIntosh, Jr. Award of Distinction was selected from the entire group of applications. The judges unanimously agreed that this project touched each of the categories, provided excellence in the region, and exhibited distinction in regional “visioning.”

Congratulations to all who entered!



Honoring 15 Years of Notable Achievement



THE CHARLES A. McINTOSH, JR. AWARD OF DISTINCTION, which recognizes outstanding achievement in the community, salutes a true statesman who dedicated a major portion of his life to improving the quality of life in the Tampa Bay region.

Charles A. McIntosh, Jr., joined the Council in 1985 at a time in life when many people retire to enjoy the easy life. For more than 15 years Mr. McIntosh served the citizens of Dade City, Florida, as Mayor and he still found time to serve as the Chairman of the Tampa Bay Regional Planning Council. He also served two terms as Chairman of the Tampa Bay Regional Planning Council Area Agency on Aging. The most prestigious award of the Annual Future of the Region Awards competition is named in his memory.



1992

Westchase: A Planned Residential Community
Newland Gulf Coast and Hillsborough County

1993

Osborne Woods: The Anchor Project for the East Tampa Initiative
City of Tampa

1994

St. Anthony's Boulevard Master Plan, Phase I
St. Anthony's Hospital and Harvard Jolly Clees Toppe, Architects

1995

Florida International Museum and Treasures of the Czars
Harvard Jolly Clees Toppe, Architects

1996

Public Sector: Long Term Dredge Spoil Disposal Plan
Manatee County Port Authority
Private Sector: Clearwater Jazz Holiday Foundation
The Clearwater Jazz Holiday

1997

Public Sector: Penny For Pinellas Information Campaign
Pinellas County Board of County Commissioners
Private Sector: Morton Plant Mease Health Care
Community Health Initiative

1998

Inventing Tampa Bay Water: A Model of Regional Cooperation

1999

Hillsborough River Greenways Task Force

2000

Pinellas Star Center

2007

Finance Park: A Conservation Lifestyle Education Project
Pinellas County Utilities

2002

North Greenwood Transformation
City of Clearwater and Bank of America

2003

Rebuilding Community: Tampa Heights
The Planning Commission

2004

Dr. Pallavi Patel Performing Arts Conservatory at the Tampa Bay Performing Arts Center
Harvard Jolly

2005

Pinellas By Design
Pinellas County Government and Pinellas Planning Council

2006

Mayor's Mentors & More
City of St. Petersburg

2007

Strategic Regional Transit Needs Assessment Video
Florida Department of Transportation, Carter & Burgess, Inc. and Tampa Digital Studios

2008

USF Research Park of Tampa Bay
USF CONNECT

FLORIDA
INTERNATIONAL
MUSEUM
A Smithsonian Institution Affiliate



Morton Plant Mease
HEALTH CARE



St. Anthony's
HEALTH CARE



PORT
Manatee
The right turn on Tampa Bay



2008 Charles A. McIntosh, Jr.

Award of Distinction

USF Research Park of Tampa Bay



Innovative minds, entrepreneurial attitudes, and state-of-the-art facilities

combine to form the foundation of The USF Research Park of Tampa Bay. A unique hub for scientists, scholars and research and technology experts, the University of South Florida is ranked as one of the top public research universities in the country – fueling substantial economic growth in the Tampa Bay area and throughout Florida. USF Research Park offers an exceptional environment with access to first-class university research and state-of-the-art laboratory equipment and infrastructure and was recently selected by Charles Stark Draper Laboratory, Inc. as its site to establish its BioMEMS research and development facility.

The Park houses 20 early-stage companies in the Tampa Bay Technology Incubator working in the life sciences, engineering and software industries. The Incubator is part of USF CONNECT, a program tying together the elements of economic development at the University of South Florida. USF CONNECT provides a single point of contact for businesses and entrepreneurs to access many of the resources necessary for success: intellectual property, management expertise, capital partners and support services.

The Florida Center of Excellence for Biomolecular Identification and Targeted Therapeutics (FCoE-BITT), located within the Park, has nearly 100 members conducting research in biomolecular identification techniques, medicinal chemistry, molecular diagnostics, drug and gene

delivery and environmental sensors. FCoE-BITT creates synergy between scientists and engineers from academia and industry from multiple disciplines who use advances in biomolecular science to identify molecules of human health significance and develop novel methods for their use in diagnosis, prevention, and treatment.

The USF Research Park of Tampa Bay has groups actively working in medical technologies such as pharmaceuticals, medical devices and nutraceuticals as well as engineering technologies such as radio frequencies, rehabilitation and clean energy.

IRX Therapeutics, a spin-out from a university technology, successfully raised \$25 million through Series A funding in June 2008. To date, the company has raised more than \$65 million in private financing. IRX is dedicated to the discovery and development of proprietary drugs for the treatment of cancer and viral diseases.

Natura Therapeutics, Inc., a university spin-out that has licensed intellectual property from USF, provides high quality nutraceutical products researched and developed and/or licensed by its team of leading scientific experts in the field of nutritional neuroscience and stem cell therapies.

The USF Rehabilitation Technology and Engineering Program incorporates service delivery, research and



academic programs to provide technology interventions for individuals with physical disabilities and develops integrated rehabilitation technology systems that increase employment of individuals with disabilities. Rehab Ideas, Inc., the newest addition to our rehabilitation cluster, applies the latest technology and engineering to increase the independence of people with physical disabilities and works with the James A. Haley Veteran's Hospital in reintegrating disabled veterans into society.

Companies such as EMS, Inc., which provides 3D scanning and rapid prototyping and Mimedx, Inc. which specializes in manufacturing tissues, tendons and ligaments as well as other companies located in the Park continue to research and develop technologies that will provide a positive economic impact on the community.

The USF Research Park of Tampa Bay has been successful in recruiting top-class talent to the Tampa Bay area. In the last 5 years, the park has grown to include more than 20 companies with an average wage of more than \$55,000.

Charles Stark Draper Laboratory, Inc., one of the world's leading research and development laboratories engaged in applied research, engineering and development, announced this year its plans to locate a BioMEMS R&D Center in the Research Park that will employ 100 people earning an average wage of \$75,000 and will conduct more than \$55 million in research activities in the Park. MEMS is the acronym for microelectromechanical systems -- microelectronics, microfabrication and micromachining technologies.

One of the focal points of the Research Park is the Tampa Bay Technology Incubator. The companies that comprise the Tampa Bay Technology Incubator employ experienced researchers and students working side by side in offices

and laboratories. This offers students hands-on experience working with cutting edge technologies related to their field of study and prepares them for the workplace.

The incubator program allows high tech start-ups to work side by side with other companies and promotes the exchange of knowledge and expertise. The companies are provided access to cost prohibitive laboratory equipment, small business counseling, interns from the College of Business's MBA program and much more including the advantage of the close proximity to the University of South Florida's top-notch faculty and students. The companies currently in the Incubator have total annual revenues of more than \$4.3 million and have received more than \$7.7 million in funding.

The Tampa Bay Technology Incubator recently graduated two companies, Modelithics, Inc. and Intezyne Technologies, Inc., that decided to remain in the Research Park and share their expertise with new small businesses in the Incubator. These model companies grew rapidly in the past few years and have become the two of the latest success stories of the Incubator.

Modelithics, Inc. is a premier provider of high-precision measurements and models for microwave/RF design simulation. The company's experience, equipment, and knowledge allows them to accurately measure components and build software models that enable popular circuit simulation tools to generate more accurate predictions of as-built performance. The company graduated from the incubator with more than 20 employees earning an average wage of \$70,000.

Intezyne Technologies, Inc. relocated to the Research Park from Boston, Massachusetts with four employees in

CONTINUED on last page.

Herman W. Goldner

Award for Regional Leadership



“Gentlemen it is time to plan together,” St. Petersburg Mayor Herman W. Goldner told a group of Tampa officials on a hot September day in 1961. It was his pronouncement delivered at a meeting in St. Petersburg that led to the formation of the Tampa Bay Regional Planning Council.

The Herman W. Goldner Award for Regional Leadership is presented to an individual who exemplifies the spirit of regional cooperation, dedication to his/her community and notable achievement in encouraging future vision.

The award is named for Mr. Herman W. Goldner, former Mayor of St. Petersburg and founding father of the Tampa Bay Regional Planning Council. Mr. Goldner became mayor in 1961 with a landslide victory; he served an additional three terms as St. Petersburg’s leader.

Mr. Goldner graduated from Case Western Reserve University Law School, Harvard University Graduate School of Business and Miami University of Ohio. Mr. Goldner practiced law from 1945 until his retirement in 1991.

Congratulations to the past recipients of The Herman W. Goldner Award for Regional Leadership



2007

Joe Smith

Chair

Tampa Bay Partnership’s
Transportation Initiative



2006

W. Don Whyte

President

Newland Communities Southeast



2005

David J. Fischer

President/CEO

Community Foundation of Tampa Bay



2004

Louis Miller

Executive Director

Hillsborough County Aviation Authority



2003

Commissioner Ronnie Duncan



2002

Commissioner Robert “Bob” Stewart

2008 Herman W. Goldner

Award for Regional Leadership



Dr. Judy Genshaft
President, University of South Florida

“Dr. Genshaft consistently stresses research partnerships with businesses, government and the community. Her involvement, as well as her leadership, exemplifies the spirit of regional cooperation.”

~ Commissioner Bill Dodson
Chair, Tampa Bay Regional Planning Council

Dr. Judy Genshaft serves as the President of the University of South Florida and she has been active with regional economic development issues since relocating to Florida in July 2000. Dr. Genshaft is active in numerous economic development organizations, including the Florida High Tech Corridor Council, the Tampa Bay Partnership, the Greater Tampa Chamber of Commerce and Committee of 100, which she chaired in 2007, as well as many other community organizations such as the Tampa Bay Performing Arts Center and Junior Achievement of West Central Florida.

Dr. Genshaft is one of three university presidents who co-chair the Florida High Tech Corridor Council, a partnership between the universities, community colleges, economic development organizations, workforce organizations and technology associations which leverages the technology talent across the state to make the I-4 corridor the center of two-thirds of Florida’s future job growth. Those partnerships have resulted in a strategic approach to high tech economic development that involves matching funds research, workforce development and a marketing program leveraging governmental, academic, EDOs and corporate budgets on a regional rather than local basis.

Dr. Genshaft’s vision for USF to become a major research university is being realized. USF is ranked in the Carnegie Foundation for the Advancement of Teaching’s highest tier classification for the designation of “research university with very high research activity” (RU/VH). USF also achieved the Carnegie Foundation’s elective community engagement classification. USF is only one of 10 public

research universities nationwide to hold both the RU/VH and Engaged designations.

Under her leadership, USF opened the USF Research Park in 2007, adding more than 230,000 square feet for bioengineering and life sciences research and economic development. The two buildings, currently home to the Center for Biological Defense, the Center for Entrepreneurship and the Tampa Bay Technology Incubator, build upon an existing cluster of biotechnology businesses – the Tampa Bay area is home to more than 370 medical device businesses that contribute approximately 51,000 jobs and more than \$5 billion annually to the region’s economy.

Recent economic development successes are tangible outcomes of Dr. Genshaft’s understanding of the unique advantages of metropolitan research universities and the importance of applied research that offers real world solutions. The partnership between SRI International and USF’s College of Marine Science and Ocean Technology to build a marine technology research center is one example. Draper Laboratory’s announcement of a BioMEMS R&D Center on campus is another. Draper will be a research partner with the University of South Florida, SRI and others to form the nucleus of a microtechnology cluster, resulting in the growth of innovation workers and economic development in the Tampa Bay region and the State of Florida.

Dr. Genshaft consistently stresses research partnerships with businesses, government and community. Her involvement, as well as her leadership, in the community is a real asset to the Tampa Bay region.

The Awards Program

The significance of innovative planning has never been more important than it is today. The Future of the Region Awards Program provides honor and recognition for notable achievement in the public and private sector for resource planning and management in the Tampa Bay region. The Tampa Bay Regional Planning Council's mission in recognizing excellence is to encourage future vision and cooperation within the regional community.

17th Annual Future of the Region

Friday, March 20, 2009
11:45 a.m.

Quorum Hotel
Tampa, Florida

Our Judges

Charles D. Blume, Executive Director
Apalachee Regional Planning Council

Ramond A. Chiamonte, Executive Director
Hillsborough County Metropolitan Planning Organization

Christopher Steinocher, Vice President of Marketing and Strategic Direction
Tampa Bay Partnership

Menu

Lemon Garlic Chicken with Artichoke Basil Buerre Blanc
Tuscan Orzo Pilaf
Vegetables
Mixed Baby Greens, Grape Tomatoes, Toasted Pinenuts with Balsamic Vinaigrette
Chef's Specialty Fresh Dessert
Warm Rolls and Whipped Butter
Coffee and Tea



The Program

Mistress of Ceremonies

Ms. Barbara Sheen Todd
Past Chair and Gubernatorial Appointee

Welcome and Introductions

Commissioner Bill Dodson
Chair
Tampa Bay Regional Planning Council

Invocation

Mayor Scott Black
Past Chair
Tampa Bay Regional Planning Council

Luncheon

Presentation

17th Annual Future of the Region Awards
Mistress of Ceremonies, Ms. Barbara Sheen Todd
Past Chair and Gubernatorial Appointee

Presentation

The Charles A. McIntosh, Jr. Award of Distinction
The Herman W. Goldner Award for Regional Leadership
Commissioner Jack Mariano, Vice-Chair
Tampa Bay Regional Planning Council

Closing Remarks

Ms. Jill Collins
Secretary/Treasurer
Tampa Bay Regional Planning Council

Adjourn

The Independent Awards Jury



Charles D. Blume

Mr. Blume currently serves as Executive Director of the Apalachee Regional Planning Council. He has held this position for twenty-five years. Prior to his service at the regional planning council, he was the Gadsden County planning and zoning director for seven years.

Mr. Blume holds a Master of Science in Public Administration from Florida State University.



Ramond A. Chiaramonte

Mr. Chiaramonte brings many years of public and private planning experience to his former role as Assistant Executive Director of the Hillsborough County City-County Planning Commission. In April of 2008, he was named Interim Executive Director of the Hillsborough County Metropolitan Planning Organization (MPO), the long range transportation planning agency for Hillsborough County and the jurisdictions of Tampa, Plant City and Temple Terrace. The Planning Commission/MPO is Florida's only state mandated long range planning agency serving the four local governments in Hillsborough County, Florida. His professional experience in planning spans three comprehensive plans and many updates, and includes public and private sector work.



Christopher Steinocher

Mr. Steinocher is Vice President of Marketing and Strategic Direction for the Tampa Bay Partnership, the economic development marketing organization for the seven-county Tampa Bay region. He is currently responsible for the strategic planning and creative implementation of the group's marketing and public relations efforts including research, brand advertising, direct mail, trade shows, and electronic and print publishing of collateral materials including the organization's website - www.TampaBay.org.

Mr. Steinocher is a graduate of Emory University. He volunteers his spare time as president of the St. Petersburg/Clearwater Film Commission, an economic development group organized to promote and recruit film and TV production in Pinellas County.



Community Service

First Place

Pinellas County MPO Livable Communities Initiative ~ Pinellas County Planning Department

The Pinellas County Metropolitan Planning Organization (MPO) Livable Communities Initiative produced the following: *Livable Communities Model Land Development Code* - provides a regulatory toolkit for local governments wishing to maintain the character or livability of an area or to change it to a more desirable urban type; *Livable Communities Model Comprehensive Plan Objectives and Policies* – provided policy framework for Model Code; and *Pinellas County Transportation Impact Fee Ordinance Amendments* encouraging developer sponsored livable community improvements.



Second Place

Bay Area Vanpool Program ~ Bay Area Commuter Services, Inc.

Bay Area Vanpool, managed by VPSI, Inc., is the outreach and marketing arm for the Bay Area Commuter Services (BACS) vanpool program and provides services to employers and commuters that live or work within Hillsborough, Pinellas, Pasco, Hernando, and Citrus counties. Sixty-one (61) vans were in service in 2008.



Honorable Mention

Education to Community Associations Means Savings ~ Southwest Florida Water Management District (SWFWMD)

Florida Yards & Neighborhoods outreach on best management practices of Florida-friendly landscaping has helped community and homeowner associations in Hillsborough, Pasco, Pinellas, and Polk counties save millions of gallons of water and thousands of dollars on their water bills. The education is funded by the Southwest Florida Water Management District.



The following entries received a Certificate of Excellence

Tierra Verde Community Overlay ~ Pinellas County Planning Department

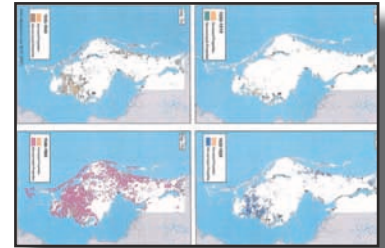


Cultural / Sports / Recreation

First Place

Pinellas County Countywide Historical & Cultural Resources Study ~ Pinellas County Planning Department

This report is the first comprehensive countywide study of Pinellas County's historical, cultural and archaeological resources ever published. The report serves as an educational tool and a support document for preserving and restoring Pinellas County's historical and cultural resources.



Second Place

Pinellas Trail Loop Program ~ Pinellas County Planning Department

The Pinellas Trail Loop is a 74-mile multi-use transportation facility, comprised of existing and planned off-road trails, that provides an uninterrupted connection to all of the major cities and an assortment of popular destinations within the county as well as connections to adjacent counties. The Trail Loop project was an effort to break a concept down to manageable parts in the form of clearly defined individual projects that could be cost-effectively designed and implemented.



Honorable Mention

Oldsmar Public Library ~ City of Oldsmar and Harvard Jolly

Completed in early 2008, the new Oldsmar Public Library embodies the City's rich history and has contributed to its ongoing downtown redevelopment. It was designed to characterize "Old Florida" architecture and includes many features that link the building to the City's past while also providing the services of a contemporary library.



Honorable Mention

Weaver Park Partnership ~ City of Dunedin

This cooperative program between the City of Dunedin and SWFWMD is a phased restoration of one of the last remnants of coastal forest in northern Pinellas County. It will provide for the long-term enhancement of Hammock Park and an improved basis for restoring other west central Florida wetland systems.



The following entries received a Certificate of Excellence

- "Art in Public Places" Kohl's Shopping Center Bus Shelter ~ PSTA
- Bay Area Horseman's Association Circuit Horse Shows ~ City of Pinellas Park
- Northeast Park Multi-Sport Sports Rink ~ City of Largo
- PSTA Black History Month Event ~ PSTA

First Place

Port of Tampa Container Terminal ~ Tampa Port Authority

Through strategic investments by the Tampa Port Authority, the Port of Tampa's container initiative has emerged in the last few years as a major catalyst for Central Florida's international trade. The container terminal, its efficient operations and ambitious expansion plans represent the Port's emergence into the global container trade and its competitive vision.



Second Place

TVI Marine International Headquarters 93 North ~ The Murray Company

The TVI Marine International Headquarters is anticipated to be the first new office building in the Tampa Bay area to receive a Leadership in Energy and Environmental Design (LEED) gold certification. The project team includes TVI Marine, Hallmark Development, Collman & Karsky Architects, and The Murray Company.



Honorable Mention

Thermal Drying Project Manatee County Utilities ~ Manatee County Utility Operations

Class AA biosolids contain no detectible levels of pathogens and very low metal concentrations to meet the most stringent requirements of the EPA's 503 regulations. The county selected thermal sludge drying technology, implemented by direct dryers, to produce the Class AA product. Locating the dryer facility adjacent to their landfill will enable Manatee County to harvest an essentially free fuel in the form of methane.



The following entries received a Certificate of Excellence

Cottages of Glencairn ~ City of Dunedin

Midtown Redevelopment Vision Plan ~ City of Plant City

Northeast Plant City Area Master Plan ~ City of Plant City

The Shops at Wiregrass ~ Forest City Enterprises

St. Pete Beach - Preserving Our Heritage & Creating Our Legacy - The Next 50 Years: An Economic Development & Redevelopment Plan for St. Pete Beach ~ Save Our Little Village, Inc. ("SOLV")

First Place

Robinson Preserve Restoration Project ~ Manatee County Board of County Commissioners and SWFWMD

Robinson Preserve, a 487-acre coastal property, is Manatee County's newest conservation preserve. This restoration project represents a successful partnership that included stakeholders ranging from local volunteers to national government agencies. The \$6 million restoration received funding from eight partners netting more than \$4.5 million in grants. A total of 124 acres were restored during this project.



Second Place

Tampa Bay Mitigation Bank ~ Tampa Bay Mitigation LC

The 161-acre Tampa Bay Mitigation Bank provides saltwater and freshwater credits in the Tampa Bay Basin. The region's first mitigation bank can be used to offset impacts for projects throughout the Tampa Bay Basin. The bank provides significant ecological and water quality benefits to the Tampa Bay Estuary.



Honorable Mention

Florida Coastal Islands Sanctuaries ~ Audubon of Florida

For 75 years Audubon's Florida Coastal Islands Sanctuaries Program has protected nesting waterbirds. Beginning in 1934, Audubon warden Fred Schultz stopped the illegal harvest of ibis, pelicans, and herons at Green Key Sanctuary. Audubon wardens and biologists patrol nesting islands, guide regional conservation initiatives, conduct research, and manage key nesting and foraging habitats. Today the sanctuaries' conservation mission stretches from Levy County to Charlotte Harbor to protect a large, diverse population of waterbirds, the largest in Florida outside of the Everglades.



The following entries received a Certificate of Excellence

Bishop Creek Erosion Control/Water Quality Improvement ~ City of Safety Harbor

Hammock Park Natural Systems Restoration ~ City of Dunedin

Mosaic - Archie Creek Relocation and Restoration ~ Mosaic Fertilizer, LLC

Pinellas County's Preserve Trails: Pathways to Wild Florida ~ Pinellas County - Environmental Lands Division

Purple Heart Park ~ City of Dunedin

Tangerine Greenway Stormwater Pollution Removal System ~ TBE Group, Inc.

Wilde Tract of Brooker Creek Preserve: Land Acquisition as an Investment in Regional Conservation ~ Pinellas County - Environmental Lands Division



Infrastructure

First Place

BEACHWALK ~ Clearwater Beach, City of Clearwater

BEACHWALK is designed to revitalize the community surrounding Clearwater’s popular south beach destination. It showcases a winding beachside promenade with lush landscaping, artistic touches and clear views to Clearwater’s award-winning beach and the water beyond. It’s a place where bicyclists, rollerbladers and pedestrians have safe, convenient beachfront access and where visitors and locals can socialize, dine, or simply enjoy the spectacular sun and surf.



Second Place

Charlotte, DeSoto, Manatee and Sarasota Counties ~ Peace River Manasota Regional Water

Unlike other areas of the state where conflict over water supplies has been intense and protracted, the four-county region of Charlotte, DeSoto, Manatee and Sarasota counties has avoided “water wars” by maintaining a strong spirit of cooperation and addressing regional water supply needs through the Peace River Manasota Regional Water Supply Authority. In July 2008 the Authority adopted the *Strategic Plan for 2025* providing the vision and goals and objectives emphasizing cooperation, regionalization, diversification and collaboration to meet the long-term aim to forge a regional water supply system that is environmentally sensitive and sustainable, highly interconnected, diversified and affordable.



Honorable Mention

Land O’Lakes Reclaimed Water Storage Reservoir ~ Pasco County

Pasco County Utilities recently completed the construction of the 100 million gallon Land O’Lakes Reclaimed Water Storage Reservoir. Its primary function is to store reclaimed water during low demand and supply reclaimed water during high demand. This reservoir supports Pasco county’s commitment to beneficial reuse of all reclaimed water supplies.



The following entries received a Certificate of Excellence

- Downtown Connection Trail - Pinellas Trail Extension ~ Pinellas County Planning Department**
- Pinellas Schools Collaborative ~ Pinellas County Planning Department**



Public Education

First Place

Hillsborough MPO Transit Study ~ Renaissance Planning Group

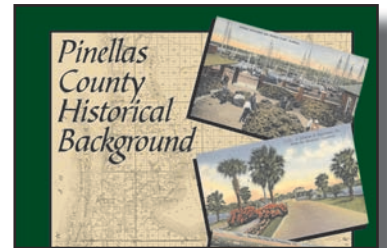
The Hillsborough County MPO Transit Study defines a more sustainable long-range transportation vision and land use vision for the county. Along with future connections to adjacent counties, the Transit Concept for 2050 illustrates how integrated transportation choices and land use decisions can influence how we accommodate future growth and development in the county by attracting new development and fostering redevelopment in desired areas. The transit investments and supporting land use policies and regulations will help preserve green space, improve accessibility, and provide alternative ways to travel to jobs and other activities.



Second Place

Pinellas County Historical Background Publication ~ Pinellas County Planning Department

This publication provides a unified natural and cultural history of Pinellas County, which aims to serve both as an educational tool for citizens and as a support document for protecting and restoring Pinellas County's natural and cultural heritage. It provides a detailed historical, political and urbanization perspective of how this area became known as Pinellas County.



Honorable Mention

"Outdoor Adventure Guide: Discover Your Wild Side" ~ Hillsborough County Economic Development Departments

The "Outdoor Adventure Guide" is the first ever brochure to inform the region's residents and visitors of nature tourism adventures in Hillsborough and adjoining counties. Produced by Hillsborough County Economic Development Department, Tourism Development Program, with Tampa Bay & Company, it highlights the area's state and regional parks, trails, waterways and greenways using a "Play Green" tagline.



The following entries received a Certificate of Excellence

- Catastrophe Readiness & Response: Proactive Roles for Public Libraries ~ Pasco County Library System
- City of St. Petersburg - Land Development Regulations ~ City of St. Petersburg
- Dump the Pump Campaign ~ PSTA
- E-Government Services: Providing More with Less ~ Pasco County Library System
- PSTA Service Modification Ambassador Program ~ PSTA

Acknowledgments

The Tampa Bay Regional Planning Council wishes to extend its sincere appreciation to the organization that generously co-sponsored the 17th Annual Future of the Region Awards Luncheon.

Platinum Sponsor



I work to reclaim the land.

I live for those that inhabit it.



All of us at Mosaic are committed to providing farmers with quality fertilizers as well as nurturing Florida's environment. That's why we work in a way that respects its fragile nature. We invest millions of dollars and countless man-hours reclaiming our mined lands, minimizing environmental impacts, protecting wildlife, and conserving resources by recycling water and planting trees. To us, environmental stewardship is more than the required thing to do—it's the right thing to do. After all, it's our home too.

Florida Phosphate. So America Grows.

www.phosphateflorida.com



MCINTOSH CONTINUED

2004. The company is committed to addressing the current and future challenges in drug delivery by developing new, advanced polymers which can be tailored to a variety of therapeutic applications to utilize innovative polymer and organic chemistry to address the most challenging obstacles in drug delivery. The company graduated from the incubator with 12 employees earning an average wage of \$55,000.

University Diagnostic Institute (UDI) has surpassed the challenge of providing superior technology, service and care to the Tampa Bay Community for the past 20 years. The first Magnetic Resonance Imaging (MRI) Scanner in the Bay area began operations here in 1984. UDI has continued to stay ahead of medical imaging developments with the most sophisticated, 64-detector CT scanner just installed for routine medical imaging as well as cutting edge cardiac CT angiography. UDI is widely recognized throughout the community for its reputation of combining excellence with superior personalized patient care and works closely with the university's faculty and the James A. Haley Veteran's Hospital.

The Florida Department of Health's location within the Park was instrumental in drawing the world-class Center for Biological Defense to the Park. The mission of the

USF Center for Biological Defense (CBD) is to conduct laboratory based applied research and develop web-enhanced surveillance systems for the rapid identification of bioterrorism such as anthrax and other emerging infectious disease events and to provide education and training in homeland security to professionals in the community.

Semiconductor Diagnostics, Inc. (SDI) is a world leader in non-contact, electrical measurement systems for real time production monitoring and process characterization in the semiconductor industry. All of SDI's current product offerings are manufactured in the Research Park.

Other tenants in the Research Park include BioMedTech Laboratories, Inc., Embassy Suites Hotel, Office of U.S. Senator Mel Martinez, Mimedx, Inc. and the H. Lee Moffitt Cancer Center Foundation, Inc.

The average company that chooses to locate to the Research Park has experienced an increase in its high wage employment by more than 250% in just a few years. The USF Research Park has proven successful in recruiting world class talent and continues to work with local officials in recruiting top tier research companies to the Research Park.

18th Annual *Future of the Region Awards*



*We cordially invite you to participate in next year's...
18th Annual Future of the Region Awards*

Call for Entries - October 2009
Deadline for Entries - Early January 2010

18th Annual Future of the Region Awards Luncheon - March 2010
Venue to be announced

For more information or to be placed on the mailing list, please contact Wren Krahl, Director of Administration/Public Information, wren@tbrpc.org, 727-570-5151 ext. 22. Visit the website to view the Annual Future of the Region Commemorative Programs, www.tbrpc.org.

Tampa Bay Regional Planning Council

4000 Gateway Centre Blvd., Suite 100, Pinellas Park, FL 33782

Phone: (727) 570-5151

FAX: (727) 570-5118 Suncom: 513-5066 Suncom FAX: 513-5118

www.tbrpc.org