

An aerial photograph of a coastal area. In the foreground, there is a large parking lot filled with cars, surrounded by palm trees. To the right, a building with a curved roof is visible, with the words "GULF PORT CASINO" written on its side. In the background, a long pier extends into the clear blue water of a bay. The sky is a bright, clear blue.

STORMWATER COMMITTEE

September 2022



Statewide Mitigation and Assessment Planning

Mitigation and Stormwater Survey

The goal of this survey is to determine what gaps/challenges exist when planning for stormwater infrastructure and flood mitigation.

Your input is appreciated and will inform the project!



<https://arcg.is/1i9XW>

Build	Build regional stakeholder collaboration and capacity building
Develop	Develop technical applications/tools to analyze risk and vulnerabilities to extreme rainfall flooding
Develop	Develop a regional approach to mitigation planning that lead to innovative mitigation projects
Create	Create a Statewide regional framework to mitigation and resiliency planning

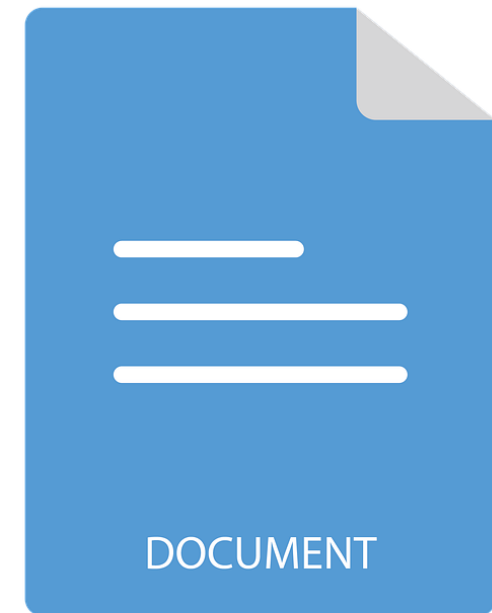
Project Goals

Project Value

- **Addresses** an unmet need by examining impacts of flooding hazards to inland counties.
- **Builds capacity** in the regional resilience planning process throughout the State, across disciplines and sectors in local government, business, and community populations.
- **Updates State Partners** on mitigation planning and projects, and mitigation strategies and needs of multiple regions.
- **Supplements** county and city preparedness plans, and supports mitigation plans that house risk and vulnerability information.
 - CEMPs** - Comprehensive Emergency Management Plans and hazard specific plans
 - CRS** - Community Rating System (NFIP) establishing need and prioritizing projects
 - LMS** - Local Mitigation Strategy
 - Post-Disaster Redevelopment Plans (PDRPs)** - Enhances long-term Recovery and Action Plan Strategies
- **Advances** communities to comply with state legislation
- **Positions** projects for funding opportunities

Regional Mitigation Needs Assessment

- Regional Context
- Vulnerability Assessment Methodology and Findings (Future Extreme Rainfall Flood Impacts)
- Current Capacity: Flood Mitigation Strategies/ Pathways
 - Federal , State, Regional & Local
 - Other Relevant Plans & Programs
- Gaps in Current Capacity (Stakeholder Input)
- Funding
- Implementation Strategies
- Regional Priority Areas and Regional Project List



WHAT WILL THIS
PROJECT DELIVER?

Technical Outcomes



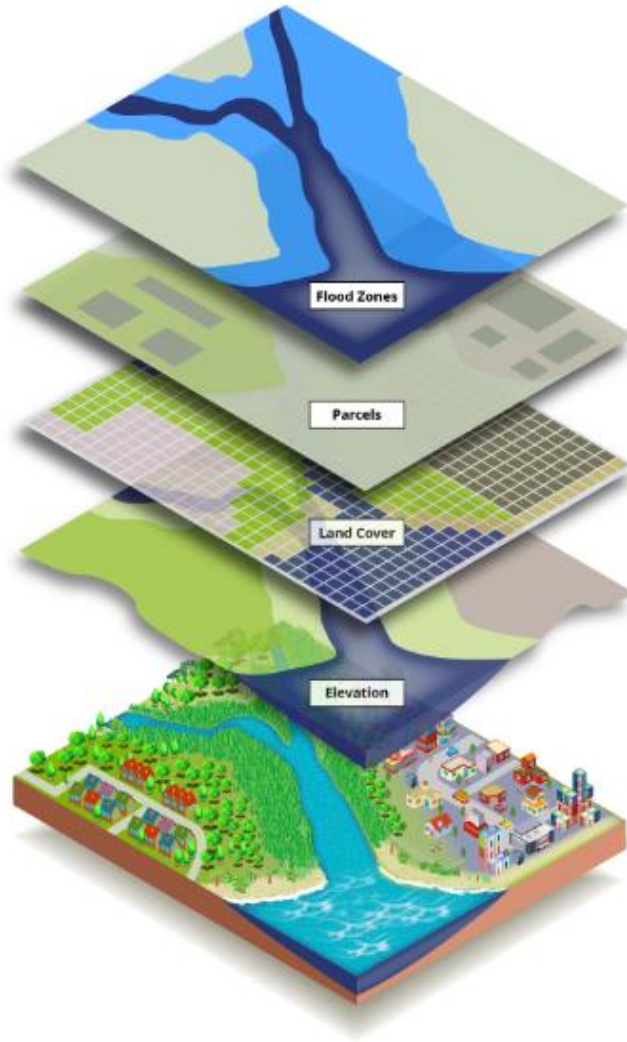
Best Practices and Resources Website

Collection of
Policies/Codes/Ordinances

Plans and Manuals

Example Projects

- Traditional
- Green
- Hybrid



GIS Analysis

Flood layer focus

- Extreme rainfall
- Inland Flooding

Other inundation will also be considered

- SLR
- Surge

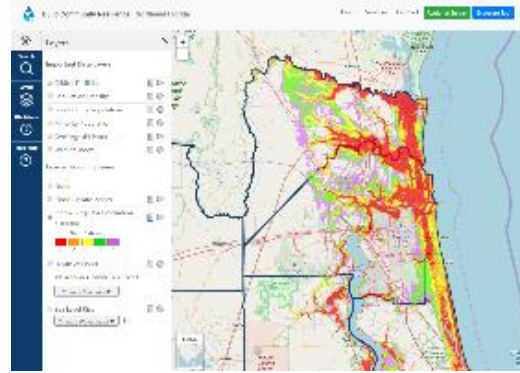
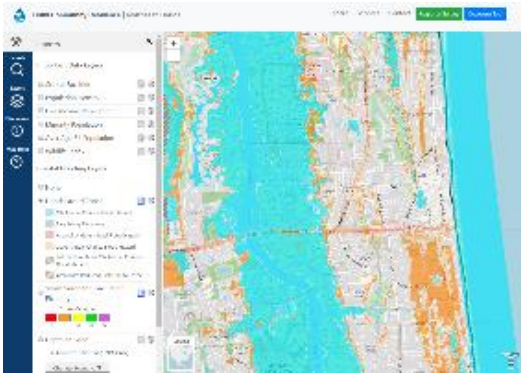
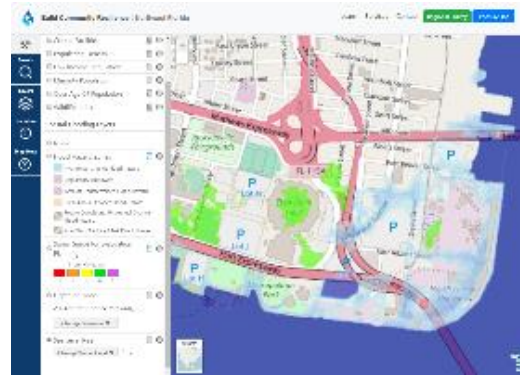
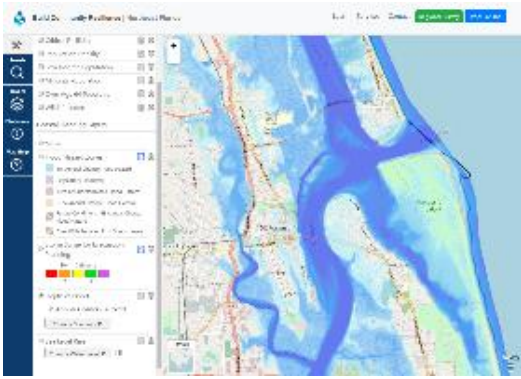
Regional critical assets

Result: Vulnerability assessment

Regional Resilience Exposure Tool

Web mapping tool

- Flood layers
- Critical assets
- Population density
- Environmental habitats



Continued Stakeholder Engagement

NEXT STEPS

We need your input!

- **Identify Gaps in Mitigation Capacity**
- **Criteria for Priority Areas**
- **Criteria for Regional Priority List**

Project Contacts

Cara Serra

cara@tbrpc.org

Ashley Mott

ashley@tbrpc.org

