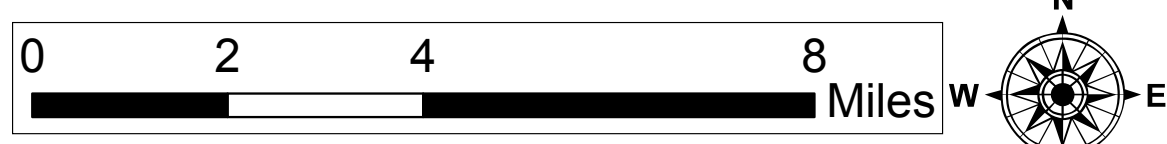
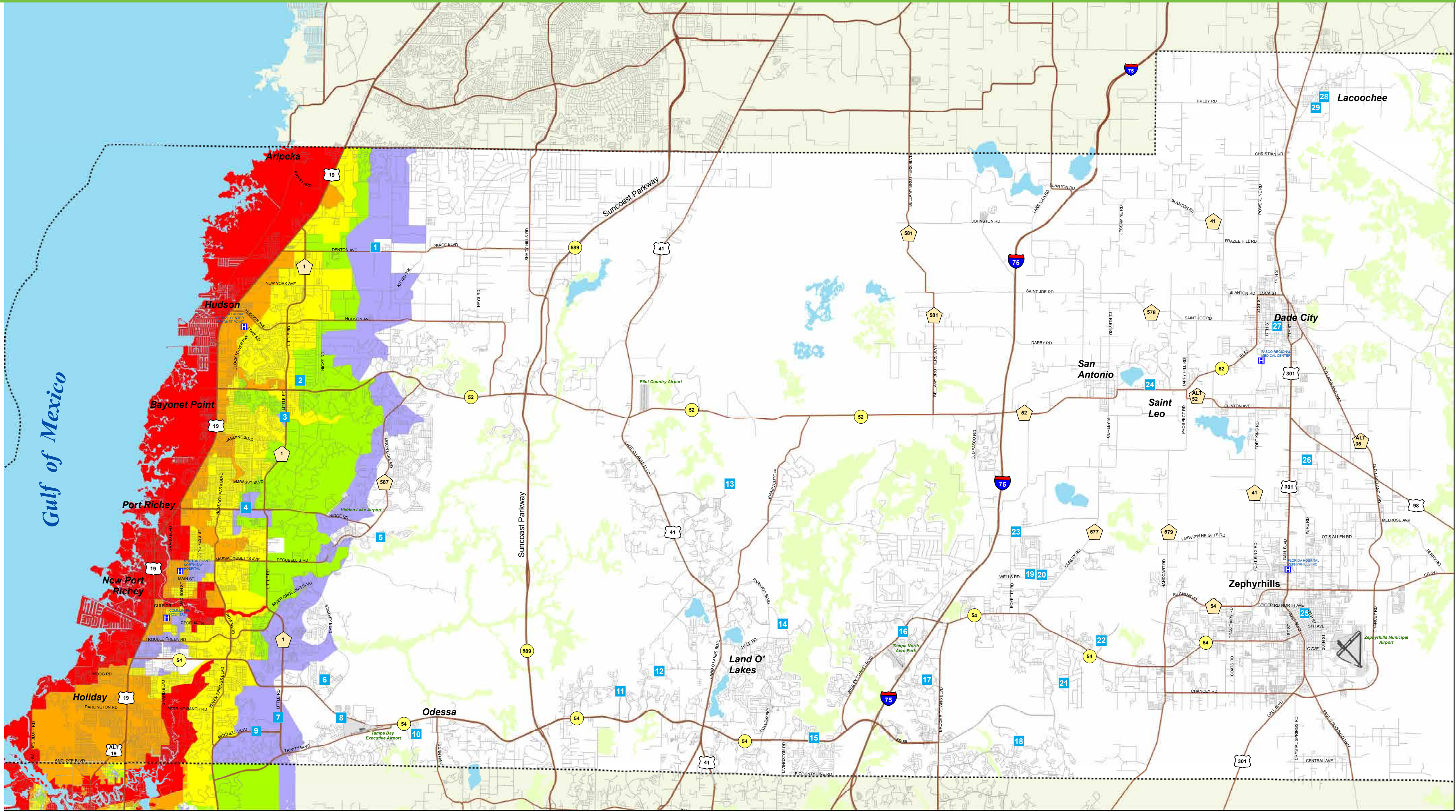


PASCO COUNTY EVACUATION ZONES & SHELTERS



Hurricane Watch:
An announcement that hurricane conditions (sustained winds of 74 mph or higher) are possible within the specified area. The hurricane watch is issued 48 hours in advance of the anticipated onset of tropical-storm-force winds.

Hurricane Warning:
An announcement that hurricane conditions (sustained winds of 74 mph or higher) are expected somewhere within the specified area. The hurricane warning is issued 36 hours in advance of the anticipated onset of tropical-storm-force winds.

Source: <http://www.nhc.noaa.gov/aboutgloss.shtml#h>

SAFFIR-SIMPSON HURRICANE WIND SCALE

CATEGORY	WIND SPEED (MPH)
Category 1	74 to 95
Category 2	96 to 110
Category 3	111 to 129
Category 4	130 to 156
Category 5	157 and over

LEGEND

Evacuation Levels	Potential Storm Tide Heights (FT)
Level A - Evacuate red areas and all manufactured home residents	To 9'
Level B - Evacuate red and orange areas and all manufactured home residents	To 15'
Level C - Evacuate red, orange and yellow areas and all manufactured home residents	To 21'
Level D - Evacuate red, orange, yellow and green areas and all manufactured homes	To 27'
Level E - Evacuate red, orange, yellow, green and purple areas and all manufactured home residents	To 34'

Evacuation Routes

SHELTER INFORMATION – Refer to Map Above

NO.	SHELTER NAME	ADDRESS
1	Fasano Regional Hurricane Shelter	11611 Denton Ave, Hudson
2	Fivay High School	12115 Chicago Ave, Hudson
3	Schrader Elementary School	11041 Little Rd., New Port Richey
4	Chasco Elementary School	7906 Ridge Rd., Port Richey
5	River Ridge Middle/High School	11646 Town Center Rd., New Port Richey
6	Longleaf Elementary School	3253 Town Ave., New Port Richey
7	James W. Mitchell High School	2323 Little Rd., New Port Richey
8	Trinity Elementary School	2209 Duck Slough Blvd., New Port Richey
9	Trinity Oaks Elementary School	1827 Trinity Oaks Blvd., New Port Richey
10	Odessa Elementary School	1874 Ketzal Dr., New Port Richey
11	Sunlake High School	3023 Sunlake Blvd., Land O' Lakes
12	Oakstead Elementary School	19925 Lake Patience Rd., Land O' Lakes
13	Connerton Elementary School	9300 Flourish Dr., Land O' Lakes
14	Pineview Elementary School	5333 Parkway Blvd., Land O' Lakes
15	Denham Oaks Elementary School	1422 Oak Grove Blvd., Lutz
16	Veterans Elementary School	26940 Progress Parkway, Wesley Chapel
17	Seven Oaks Elementary School	27633 Mystic Oak Blvd., Wesley Chapel
18	Wiregrass Ranch High School	2909 Mansfield Blvd., Wesley Chapel
19	Wesley Chapel High School	30651 Wells Rd., Wesley Chapel
20	Thomas E Weightman Middle School	30649 Wells Rd., Wesley Chapel
21	Double Branch Elementary School	31500 Chancey Rd., Wesley Chapel
22	New River Elementary School	4710 River Glen Blvd., Wesley Chapel
23	Watergrass Elementary School	32750 Overpass Rd., Wesley Chapel
24	St. Leo University	33701 State Road 52, St. Leo
25	Raymond B. Stewart Middle School	38505 Tenth Ave., Zephyrhills
26	Centennial Middle School	38505 Centennial Rd., Dade City
27	Pasco Middle School	13925 14th Street, Dade City
28	Lacoochee Elementary School	38815 Cummer Rd., Dade City
29	Lacoochee Community Center	38724 Mudcat Grant Blvd., Dade City

USING YOUR COUNTY MAP

1. Locate where you live and work on the map.
2. Determine whether you are in an evacuation area, and if so, what level (color).
3. If you are in an evacuation area, or mobile home/RV, decide where you will go if ordered to evacuate. Your choices include:
 - ✓ Home of a relative or friend outside the evacuation zone
 - ✓ Hotel/motel outside the evacuation zone (make arrangements early)
 - ✓ Go to a public shelter
 - ✓ As a last resort leave the area entirely
4. If you must go to a public shelter, use your county map to decide which one is convenient. Make sure you verify the shelter is open before you go.

HURRICANE THREAT

- ✓ The colored areas on the map are vulnerable to storm surge. Storm surge is produced by water being pushed towards the shore by the force of the winds moving around the storm.
- ✓ Storm surge creates a path of destruction, wiping out structures as it rapidly surges inland and then recedes. This is a life threatening situation for anyone who ignores mandatory evacuation orders and stays in vulnerable areas.
- ✓ Hurricanes are categorized on a scale of 1 to 5, depending on wind strength and destructive power. The evacuation zones are color coded to designate the level of storm surge likely to occur.
- ✓ If you live in an area ordered to evacuate, gather your family/pets and emergency supplies, secure your home and leave immediately. Failure to obey a mandatory evacuation order is a violation of state and local laws.

Note: All persons living in mobile homes/RVs must evacuate for all mandatory evacuation orders, regardless of where you are located in the county.

IMPORTANT CONTACT INFORMATION

ANIMAL SERVICES	
DADE CITY	352-521-5194
LAND O' LAKES	813-929-1212
NEW PORT RICHEY	727-834-3216
EMERGENCY MANAGEMENT	727-847-8959
TDD	727-847-8949
HIGHWAY PATROL	813-632-6859
DUKE ENERGY	800-228-8485
SHERIFF	800-854-2862
SOLID WASTE	727-847-8123
SPECIAL NEEDS SHELTER REGISTRATION	727-847-8959
TDD	727-847-8949
TECO	813-223-0800
TO REPORT POWER OUTAGES	877-588-1010
WITHLACOOCHEE RIVER ELECTRIC	352-588-5115
	727-868-9465
CATHOLIC CHARITIES	352-686-9897
AMERICAN RED CROSS	727-848-8354
SALVATION ARMY	727-815-8539
UNITED WAY	727-845-3030
211 REFERRAL LINE	2-1-1
NOAA WEATHER RADIO	FIPS code 012101
GET A PLAN	WWW.READY.GOV

WWW.PASCOEMERGENCYMANAGEMENT.COM

FLOOD THREAT RECOGNITION SYSTEM

Pasco County has a Flood Threat Recognition System that is used by the Office of Emergency Management (OEM) to monitor and convey threatening conditions to the public. In addition to the information that will be displayed on our website <http://www.pascoemergencymanagement.com/>, residents should tune to TV and radio weather broadcasts and be alert to special local advisories. Local radio and TV stations for our area are:

RADIO

WUSF-FM 89.7	WDAE-AM 620
WFLZ-FM 93.3	WFLA-AM 970
WSJT-FM 94.1	WWBA-AM 1040
WSUN-FM 97.1	WWJB-AM 1450
WXTB-FM 97.9	WAMA-AM 1550
WQYK-FM 99.5	WBUL-AM 1620
WMTX-FM 100.7	
WRBQ-FM 104.7	
WJQB-FM 106.3	

TELEVISION (Cable Channels are Specific to Cable Provider)

Bay News 9
WFLA-TV News Channel 8
WTSP-TV Channel 10
WTVT-TV Fox 13
WFTS-TV Channel 28

The OEM maintains contact with the National Weather Service and National Hurricane Center and relays updates of threatening weather to government, media, hospitals, and nursing homes. The OEM can override the cable broadcast system to provide the public with information on storms, flood watches, and flood warnings. Law enforcement and fire-rescue officials have the ability to deliver flood warning messages if a storm develops at night with no opportunity for prior warning to the public. Warnings can be delivered to affected residents via telephone through a reverse 911 system. Another source of information is the NOAA Weather Radio. Flood watches and warnings will be broadcast on these radios as soon as they are issued by the National Weather Service.

Evacuation shelters and routes are identified on the website and in the telephone directory. Assistance in evacuation can be arranged for eligible parties by registering with the Office of Emergency Management. Call (727) 847-8137 for information on the Special Needs Program.

LOCAL FLOOD HAZARD

The biggest threat of general flooding is during the hurricane season (June through November). Pasco County is a participating community in the National Flood Insurance Program (NFIP), which means that you can purchase flood insurance to protect your property against the hazard of flooding. Flooding in Pasco County is caused by riverine flooding, closed basin flooding, and coastal flooding. Sometimes these floods occur as flash floods. Riverine and closed basin flooding occur due to rainfall events and are fresh water floods. Coastal flooding is a salt water flood that occurs as a result of storm surge (wind driven water) or heavy rain, which may be exacerbated by an astronomical high tide. Flood damage probability is high in Pasco County because a large number of existing homes were built prior to Pasco County joining the NFIP and receiving Flood Insurance Rate Maps which indicate required structure elevations to avoid or minimize flooding.

Special Needs Shelters

Shelters with this designation are county staffed Pet Friendly Shelters. Please bring cage, food, water, medications and proof of vaccinations.

Shelters are not listed in the order they are opened and shelter openings vary with each emergency depending on the type and intensity of the disaster. Stay tuned to local media for a listing of shelters which will be opened for an event. Do not go to the shelter until local officials announce through the media that the shelter is open.

Pasco County provides a shelter program for those residents requiring special medically related care. Special needs shelters will be available for persons requiring more skilled medical care than available in a public shelter but not requiring an acute care facility such as a hospital. If this type of extended care is needed, contact Pasco County Emergency Management office at 727-847-8959 to be considered for registration into this program.